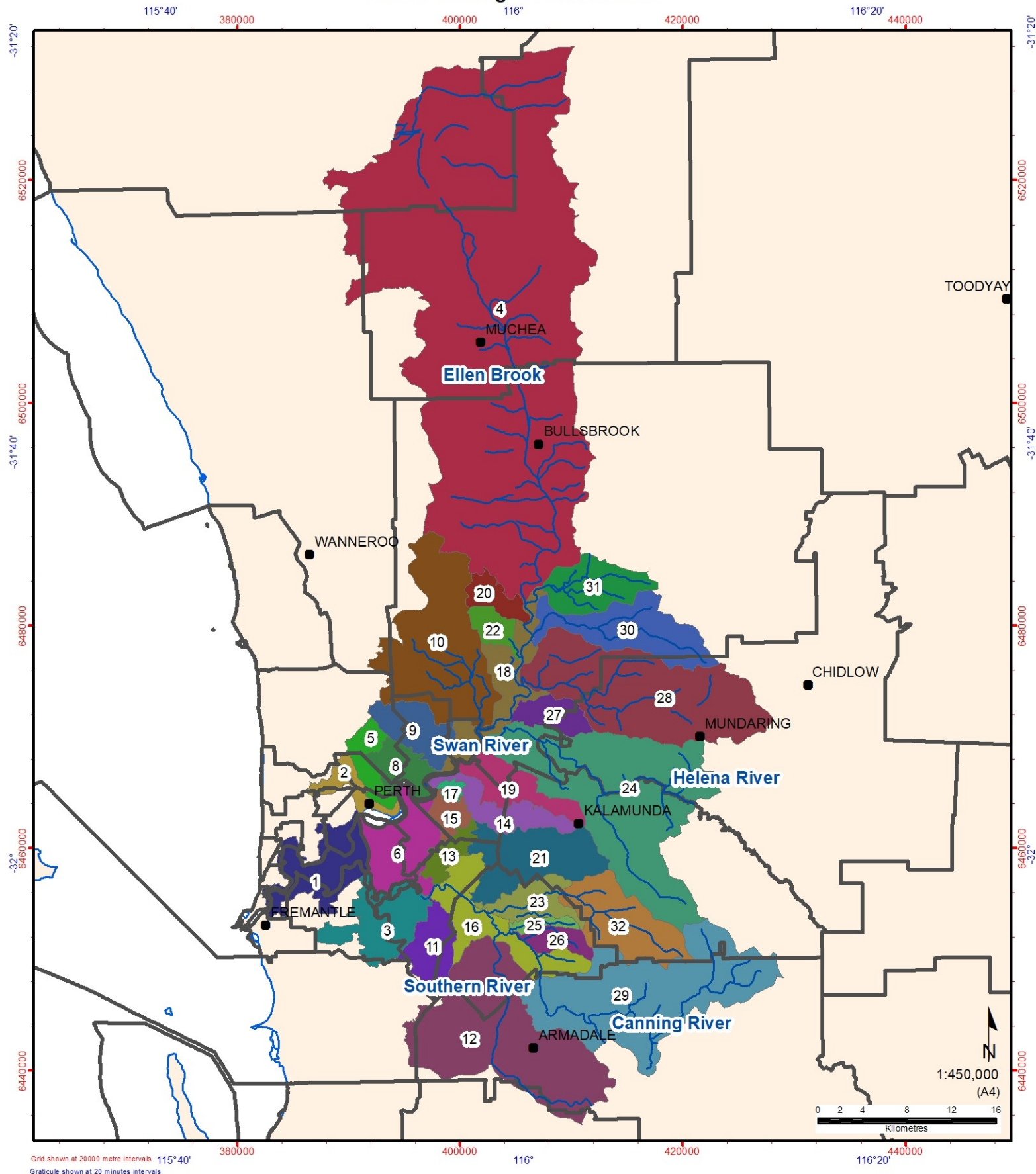


Swan Canning Subcatchments



Grid shown at 20000 metre intervals 115°40' 380000 400000 420000 440000
 Graticule shown at 20 minutes intervals

Legend

- WA Townsites
- Swan Canning Catchment waterways
- ▭ Local Governments

Swan Canning Subcatchments

- | | | |
|---------------------------|-----------------------------|--------------------------|
| 1, Downstream | 9, Bayswater Main Drain | 21, Yule Brook |
| 2, CBD | 10, Bennett Brook | 22, Saint Leonards Creek |
| 3, Bullcreek | 11, Bannister Creek | 23, Bickley Brook |
| 4, Ellen Brook | 12, Southern River | 24, Helena River |
| 5, Claisebrook Main Drain | 13, Mills Street Main Drain | 25, Helm Street |
| 6, South Perth | 14, Perth Airport South | 26, Ellis Brook |
| 8, Maylands | 15, South Belmont | 27, Blackadder Creek |
| | 16, Lower Canning | 28, Jane Brook |
| | 17, Belmont Central | 29, Upper Canning River |
| | 18, Upper Swan | 30, Susannah Brook |
| | 19, Perth Airport North | 31, Millendon |
| | 20, Henley Brook | 32, Munday Brook |

Produced by the
**Department of
 Biodiversity, Conservation
 and Attractions**

Produced at 1:27pm, on Jan 3, 2023



Roads and tracks on land managed by DBCA may contain unmarked hazards and their surface condition is variable. Exercise caution and drive to conditions on all roads.

The Dept. of Biodiversity, Conservation and Attractions does not guarantee that this map is without flaw of any kind and disclaims all liability for any errors, loss or other consequence which may arise from relying on any information depicted.