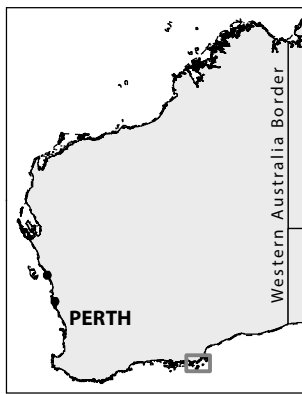
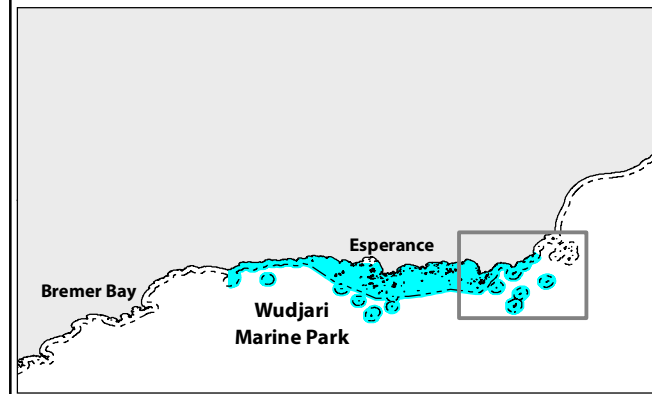
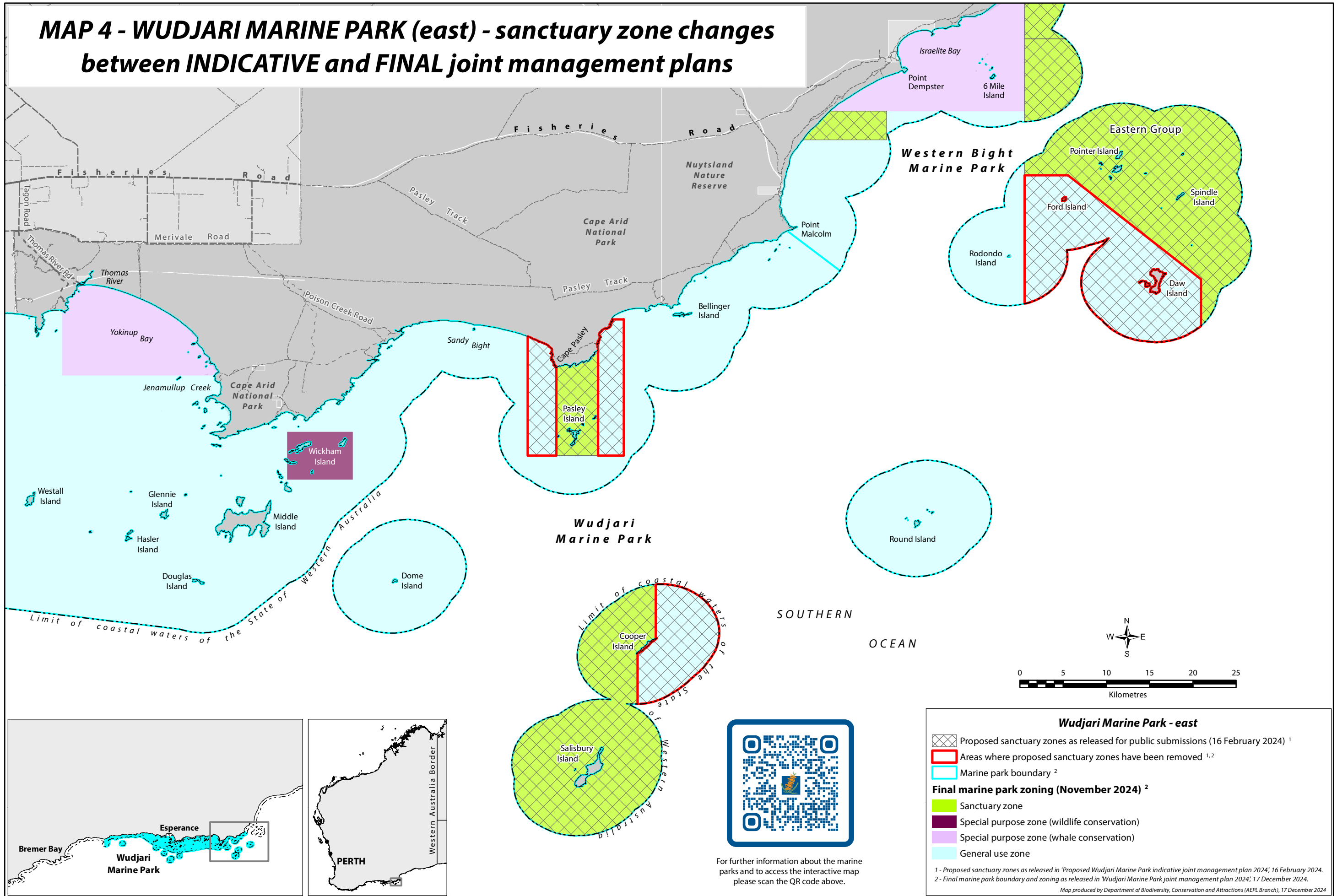


MAP 4 - WUDJARI MARINE PARK (east) - sanctuary zone changes between INDICATIVE and FINAL joint management plans



For further information about the marine parks and to access the interactive map please scan the QR code above.

Wudjari Marine Park - east

- Proposed sanctuary zones as released for public submissions (16 February 2024) ¹
- Areas where proposed sanctuary zones have been removed ^{1,2}
- Marine park boundary ²

Final marine park zoning (November 2024) ²

- Sanctuary zone
- Special purpose zone (wildlife conservation)
- Special purpose zone (whale conservation)
- General use zone

1 - Proposed sanctuary zones as released in 'Proposed Wudjari Marine Park indicative joint management plan 2024', 16 February 2024.
2 - Final marine park boundary and zoning as released in 'Wudjari Marine Park joint management plan 2024', 17 December 2024.
Map produced by Department of Biodiversity, Conservation and Attractions (AEPL Branch), 17 December 2024