



Department of Biodiversity,
Conservation and Attractions



Biodiversity and
Conservation Science

*We're working for
Western Australia.*

Swan Canning Estuary Water Quality Monitoring Project

Weekly Water Quality Report

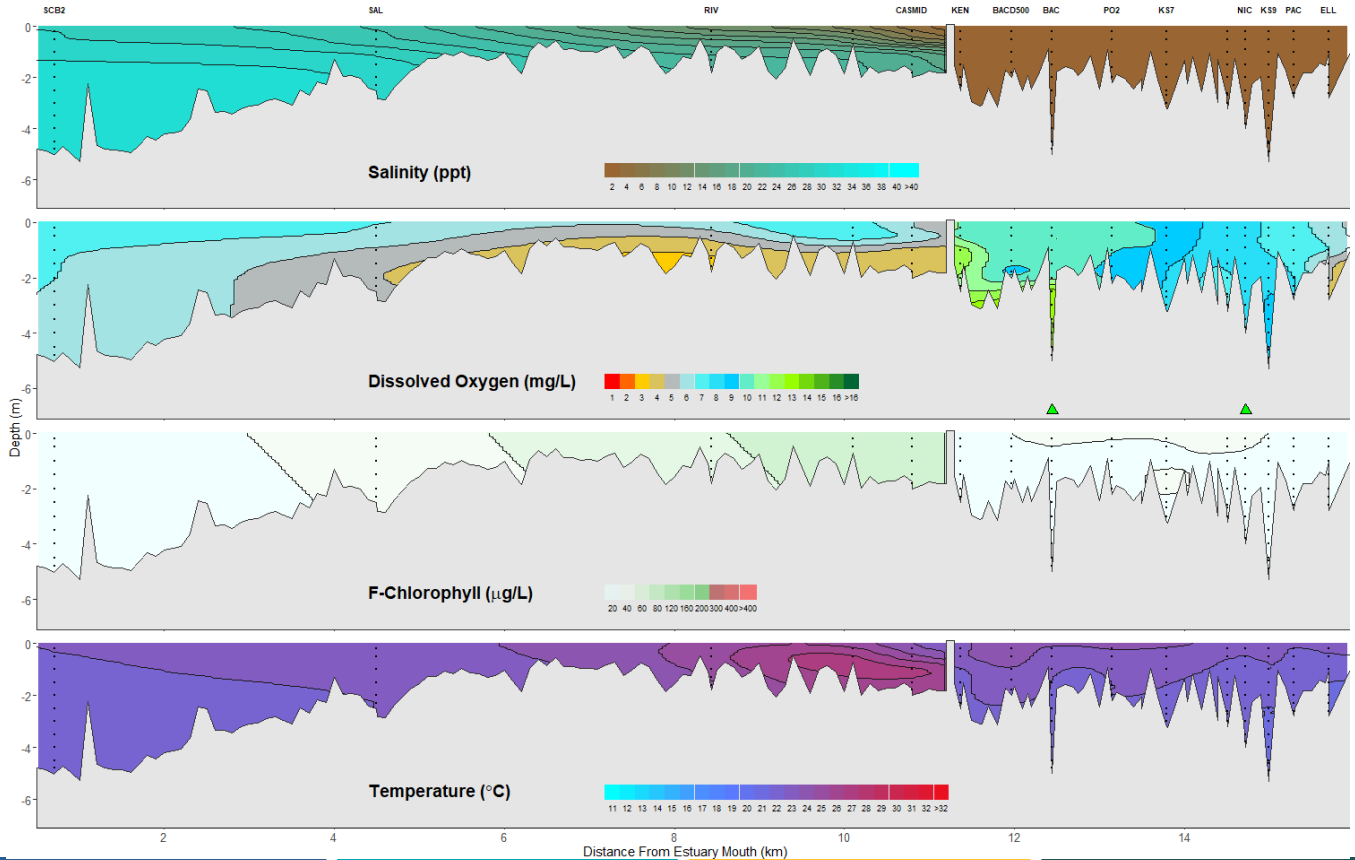
Canning Estuary and Lower Canning River

19 November 2024

Prepared by

Rivers and Estuaries Science
Biodiversity and Conservation Science
Department of Biodiversity, Conservation and Attractions

Canning Estuary and Lower Canning River - Water Quality Profiles – 19 November 2024



Date: 19 November 2024

Weather & tide conditions: Conditions were cloudy with a predominantly north-westerly breeze of up to 6.4 knots. The predicted tides at Barrack St were 1.15 m at 12:07 am (high tide) and 0.48 m at 11:39 am (low tide). Perth recorded 1.4 mm rainfall in the week prior to sampling (Bureau of Meteorology).

Oxygenation: The Bacon St and Nicholson Rd oxygenation plants were triggered to provide oxygen in the 24 hours prior to sampling.

Canning Estuary (SCB2 to CASMID): The Canning Estuary was saline at SCB2, brackish over saline at SAL, brackish at RIV and fresh over brackish at CASMID. Waters were oxygenated or well oxygenated, except bottom waters at RIV and CASMID which were low in oxygen. Chlorophyll fluorescence was moderate in the subsurface waters at RIV. Water temperatures ranged from 21.8 to 26.2 °C at the time of sampling.

Lower Canning River (KEN to ELL): The Lower Canning River was fresh. Waters were oxygenated or well oxygenated, except bottom waters at ELL which were low in oxygen. Chlorophyll fluorescence was low and water temperatures ranged from 20.1 to 23.5 °C at the time of sampling.

NB: Profile plots are visual interpolations of measured parameters only. Detailed data are available at wir.water.wa.gov.au.

Oxygenation Plant Operational Status:

- ▲ Operating for part or all of the 24 hours prior to sampling
- ▲ Operable but not triggered to operate in the 24 hours prior to sampling
- ▲ Inoperable for part or all of the 24 hours prior to sampling

Definitions:

Salinity – fresh <5, brackish 5-25, saline 25-35, hypersaline >35
Dissolved oxygen – well oxygenated >6 mg L⁻¹, oxygenated >4-6 mg L⁻¹, low oxygen >2-4 mg L⁻¹, hypoxic 0.5-2 mg L⁻¹, anoxic <0.5 mg L⁻¹
Chlorophyll fluorescence (low flow): low < 50 µg L⁻¹, moderate 50-150 µg L⁻¹, high 150-400 µg L⁻¹, extreme > 400 µg L⁻¹