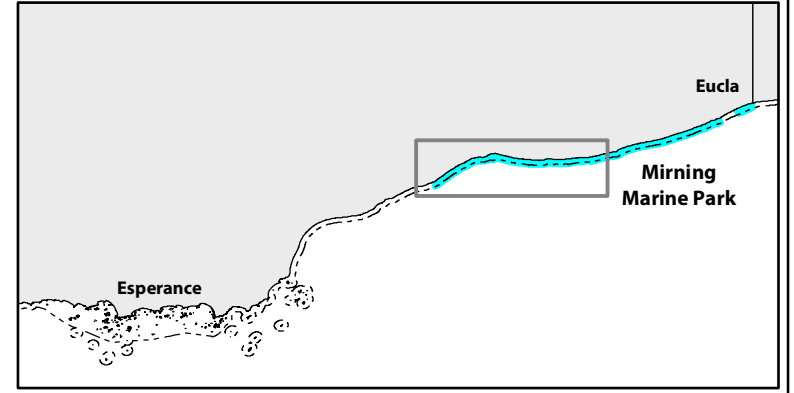
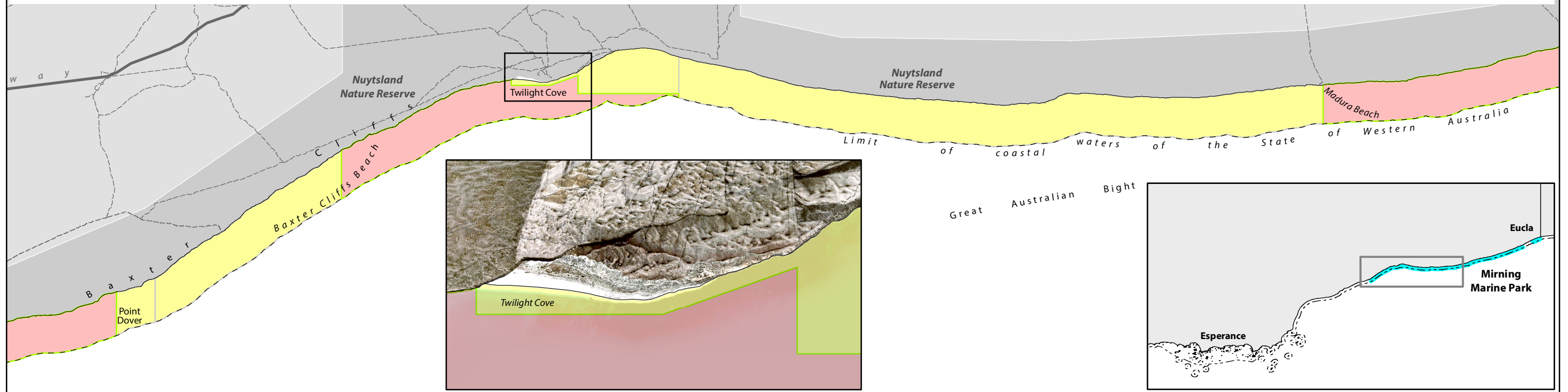


# MAP 7 - WHERE CAN I RECREATIONALLY FISH IN THE NEW SOUTH COAST MARINE PARK?



**Mirning Marine Park**

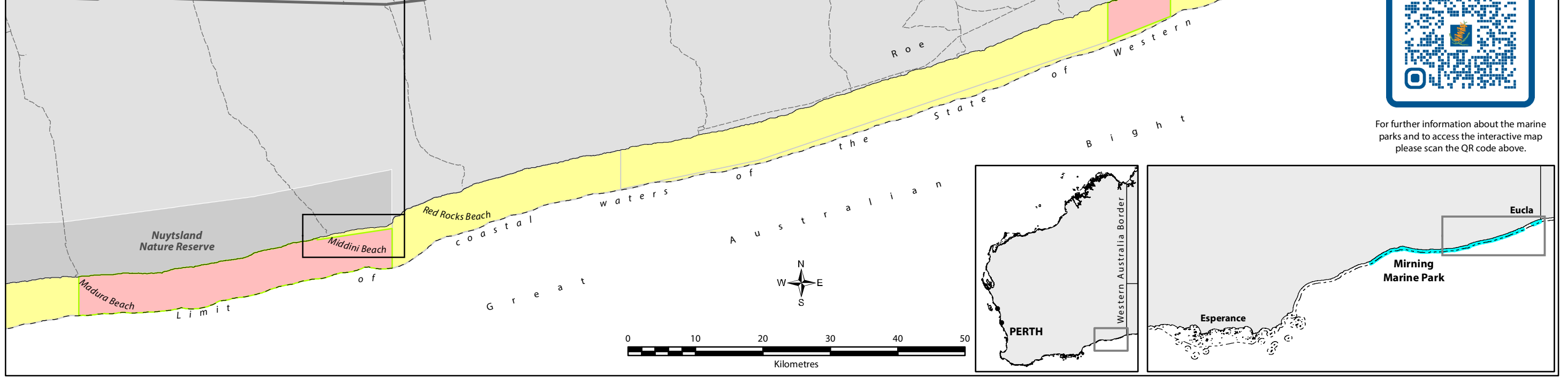
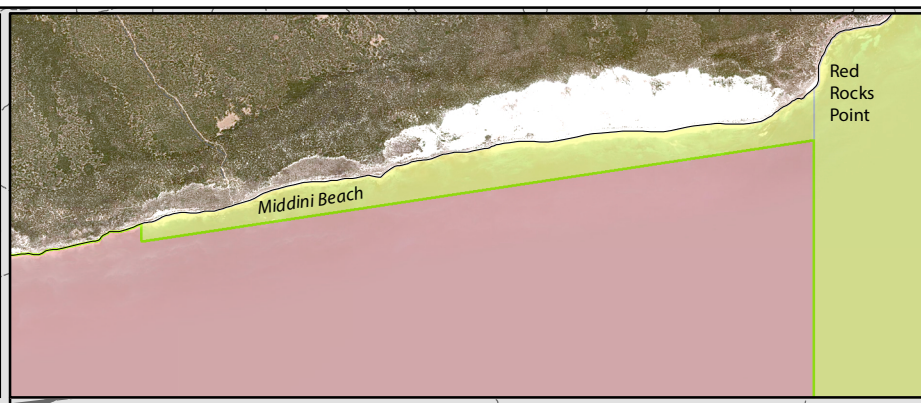
- Sanctuary zone boundaries <sup>1</sup>
- Other zone boundaries <sup>1</sup>

**Is recreational fishing allowed? <sup>2</sup>**

- YES - includes line, hand and spearfishing from shore and/or boat
- NO

<sup>1</sup> - Marine park and zone boundaries depicted on this map extend generally to the high water mark and include estuaries as shown on this map.  
<sup>2</sup> - State recreational fishing rules apply.

**Note:** the four marine parks on the south coast fall within four Native Title determination areas: Wagyl Kaip and Southern Noongar, The Esperance Nyungar, Ngadjju and WA Mirning People. Importantly, they will be managed as one interconnected ecological system – the 'South Coast Marine Park'.  
 Map produced by Department of Biodiversity, Conservation and Attractions (AEPL Branch), 31 October 2024



For further information about the marine parks and to access the interactive map please scan the QR code above.