



Swan Canning Estuary Water Quality Monitoring Project

Weekly Water Quality Report

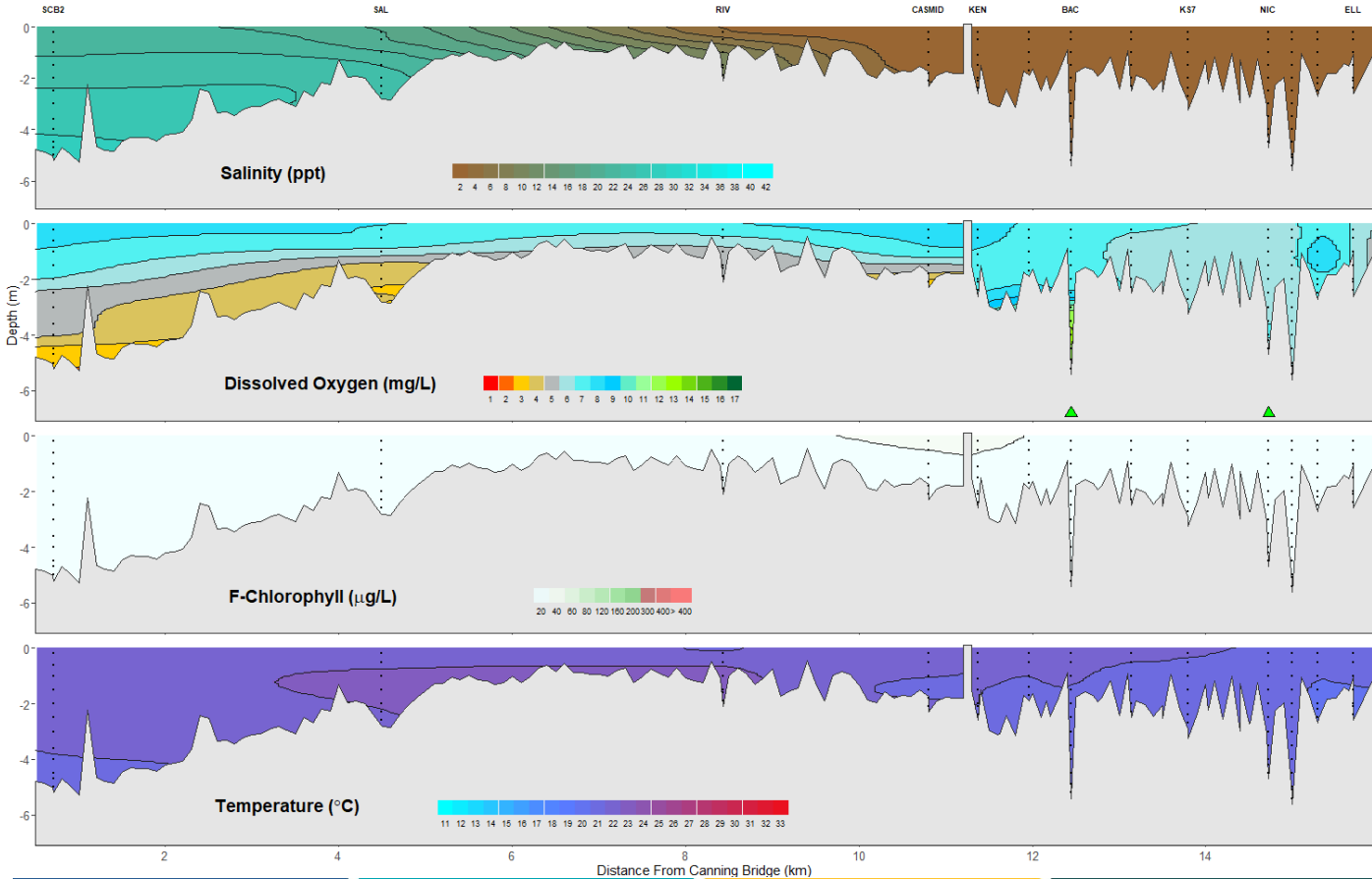
Canning Estuary and Lower Canning River

15 October 2024

Prepared by

Rivers and Estuaries Science
Biodiversity and Conservation Science
Department of Biodiversity, Conservation and Attractions

Canning Estuary and Lower Canning River - Water Quality Profiles – 15 October 2024



Date: 15 October 2024

Weather & tide conditions: Conditions were partly cloudy, with a westerly breeze of up to 6.3 knots. The predicted tides at Barrack St were 0.74 m at 3:42 am (low tide), 0.94 m at 10:00 am (high tide), 0.70 m at 4:46 pm (second low tide) and 0.88 m at 10:43 pm (second high tide). Perth recorded 2.2 mm rainfall in the week prior to sampling (Bureau of Meteorology).

Oxygenation: The Bacon St and Nicholson Rd oxygenation plants were triggered to provide oxygen in the 24 hours prior to sampling.

Canning Estuary (SCB2 to CASMID): The Canning Estuary was brackish over saline at SCB2, brackish at SAL, fresh over brackish at RIV and fresh at CASMID. Waters were oxygenated or well oxygenated, except bottom waters at SCB2, SAL and CASMID which were low in oxygen. Chlorophyll fluorescence was low and water temperatures ranged from 20.1 to 22.4 °C at the time of sampling.

Lower Canning River (KEN to ELL): The Lower Canning River was fresh, waters were oxygenated or well oxygenated and chlorophyll fluorescence was low. Water temperatures ranged from 19.7 to 21.7 °C at the time of sampling.

NB: Profile plots are visual interpolations of measured parameters only. Detailed data are available at wir.water.wa.gov.au.

Oxygenation Plant Operational Status:

- ▲ Operating for part or all of the 24 hours prior to sampling
- ▲ Operable but not triggered to operate in the 24 hours prior to sampling
- ▲ Inoperable for part or all of the 24 hours prior to sampling

Definitions:

Salinity – fresh <5, brackish 5-25, saline 25-35, hypersaline >35
Dissolved oxygen – well oxygenated >6 mg L⁻¹, oxygenated >4-6 mg L⁻¹, low oxygen >2-4 mg L⁻¹, hypoxic 0.5-2 mg L⁻¹, anoxic <0.5 mg L⁻¹
Chlorophyll fluorescence (mod/high flow): low < 60 µg L⁻¹, moderate 60-160 µg L⁻¹, high 160-400 µg L⁻¹, extreme > 400 µg L⁻¹