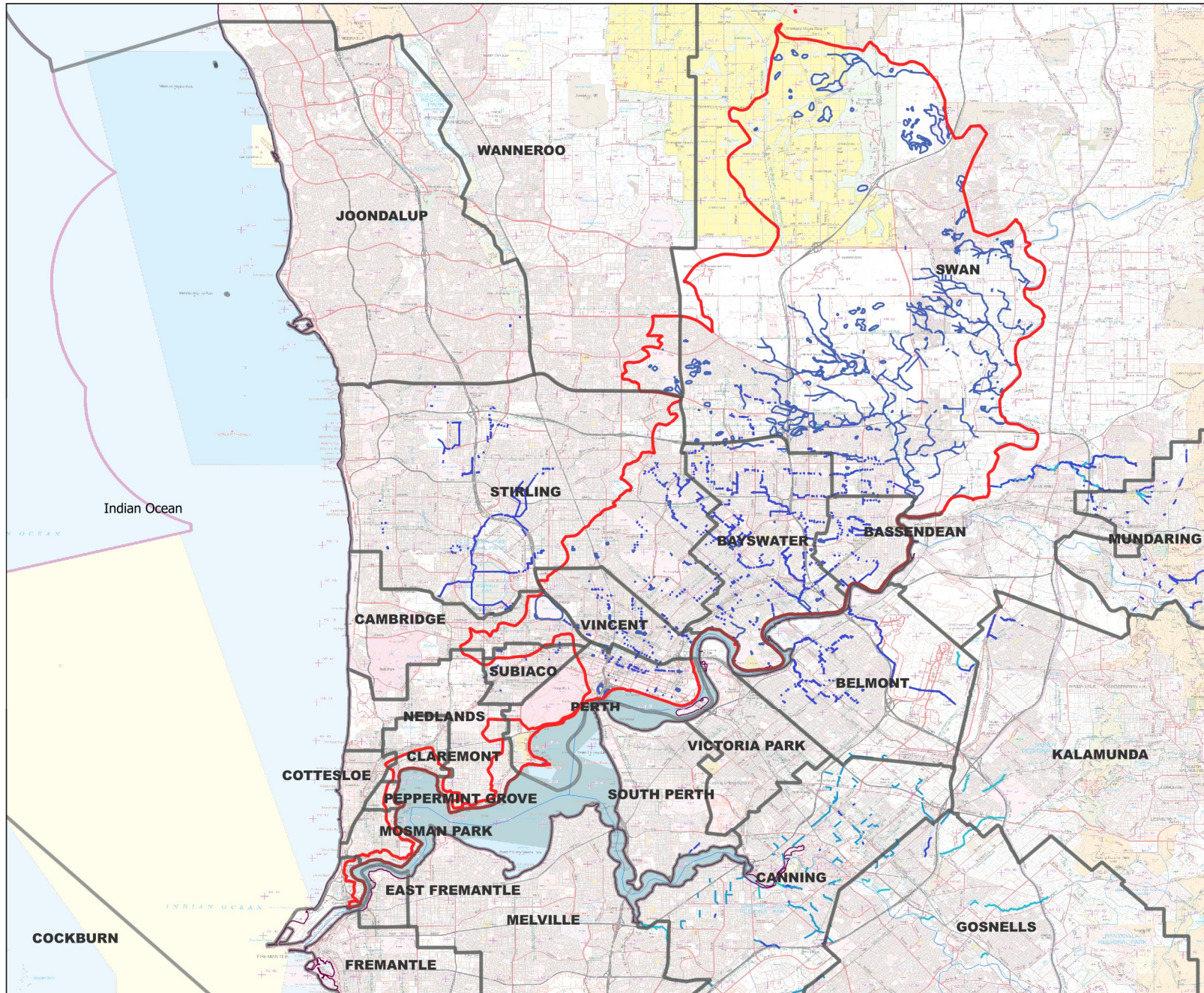


# Surface water drainage system in the North Subregion, that are connected to the Swan River



**Legend**

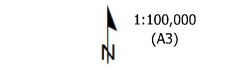
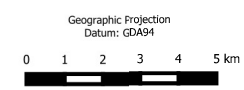
- MinorHydrography\_NorthSubregion
- DrainStructureLine\_NorthSubregion
- DrainOpenChannel\_NorthSubregion
- State Drainage Lines - Major

**Subregions in Catchment**

- North

**DoW\_Stormwater\_Drains**

- 10(OOPEN DRAIN)
- 11(O/DRAIN WAWA)
- L-lined channel
- Local Authority Drain
- Open Drain
- Open Drain Improved water
- Open Drain Natural waterc
- Open Drain Open lined dra
- Open Drain Open unlined d
- W- natural water course



Produced by Michelle Donnelly  
Department of Biodiversity, Conservation and Attractions

Department of Biodiversity, Conservation and Attractions

Job Ref: teest  
Produced at 11:36 AM on July 30, 2024

The Department of Biodiversity, Conservation and Attractions does not guarantee that this map is without flaw of any kind and disclaims all liability for any errors, loss or other consequence which may arise from relying on any information depicted. Roads and tracks on land managed by DBCA may contain unmarked hazards and their surface condition is variable. Exercise caution and drive to conditions on all roads.