



Attachment 2

Architectural Plans

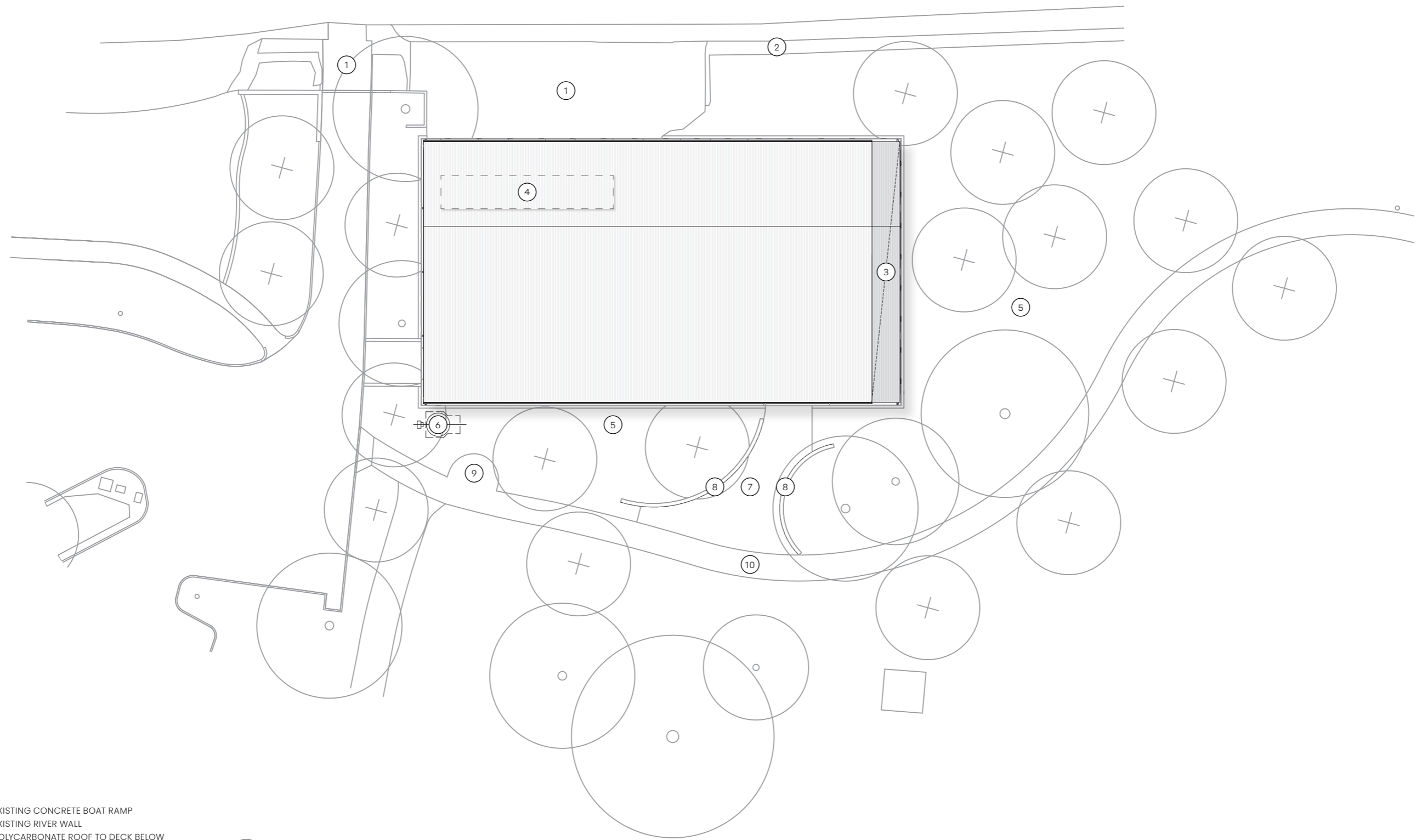


Coode Street Boathouse

Development Application
Revision A

September 2023
Whadjuk Noongar Country

**TR
CB.**



- 1. EXISTING CONCRETE BOAT RAMP
- 2. EXISTING RIVER WALL
- 3. POLYCARBONATE ROOF TO DECK BELOW
- 4. PV SOLAR ARRAY
- 5. NEW LANDSCAPING
- 6. NEW SEWER PUMP STATION
- 7. PAVED ENTRY
- 8. LOW HEIGHT LANDSCAPE SEATING WALL
- 9. 3 BIKE RACKS (PER EXISTING)
- 10. NEW FOOTPATH TO MATCH EXISTING



Scale 1:400 @ A3

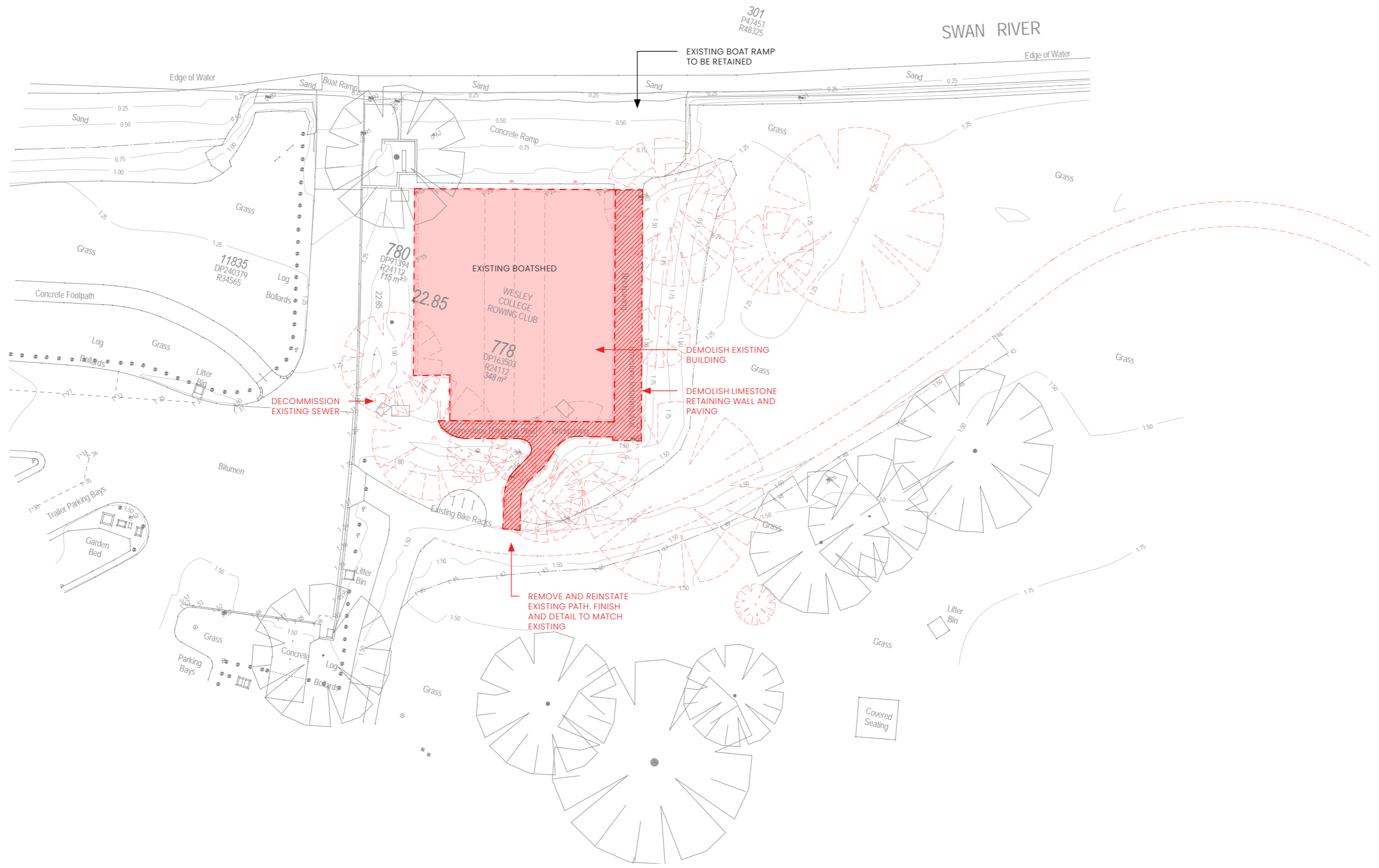


Site Plan

DA 2 Revision A

Coode Street Boathouse Development Application September 2023



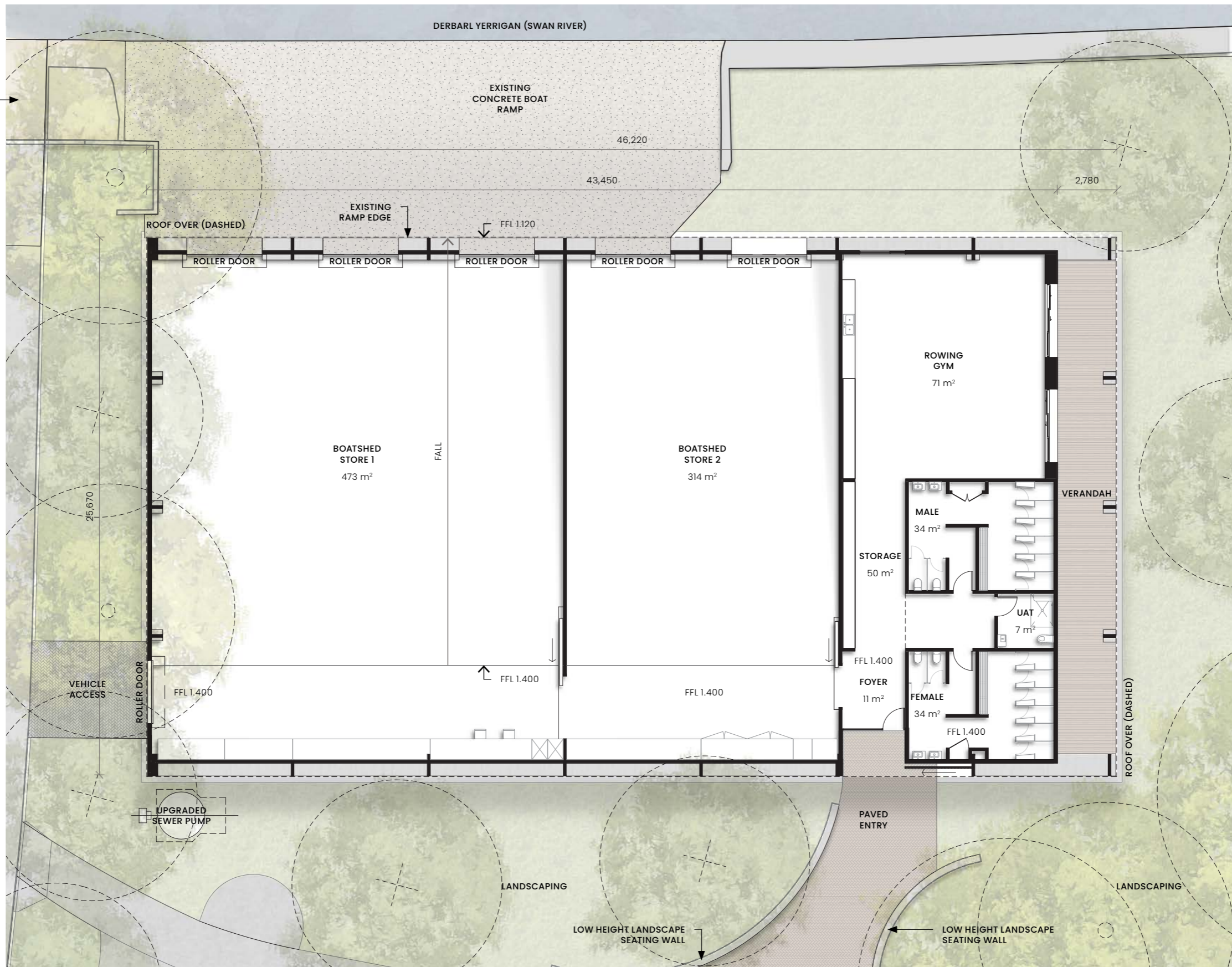


Demolition Plan

DA 3 Revision A

Coode Street Boathouse Development Application September 2023





Floor Plan

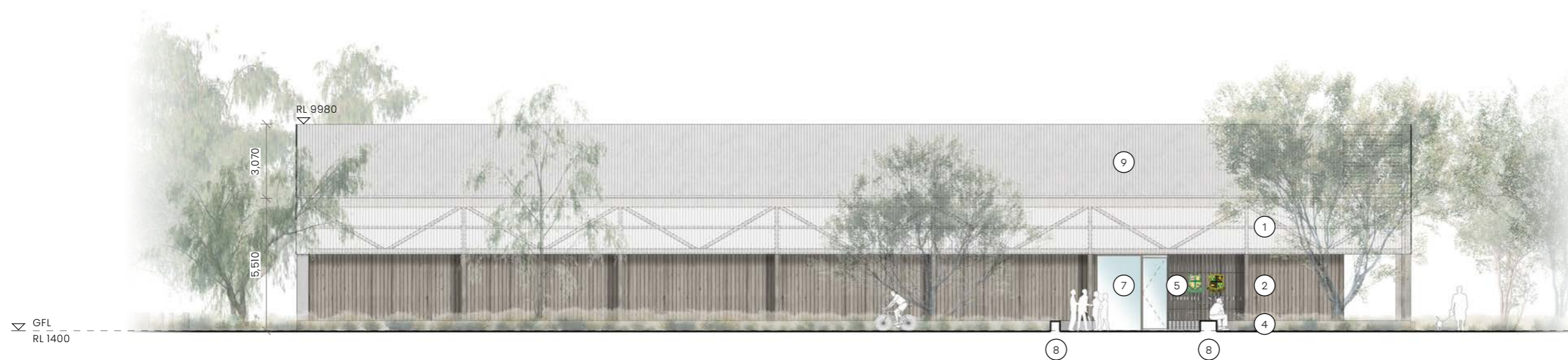
DA 4 Revision A

Coode Street Boathouse Development Application September 2023





North Elevation



South Elevation

- | | |
|--|---|
| 1. CORRUGATED POLYCARBONATE SHEETING | 6. EXISTING CONCRETE BOATRAMP |
| 2. HARDWOOD CLADDING | 7. TIMBER FRAMED GLAZING |
| 3. METAL ROLLER DOORS | 8. LOW HEIGHT SEATING WALL |
| 4. CONCRETE | 9. COLORBOND METAL ROOF SHEETING (SHALE GREY) |
| 5. BESPOKE SLIDING SECURITY SCREEN WITH COLLEGE LOGO'S | 10. PV SOLAR ARRAY |



Scale 1:200 @ A3

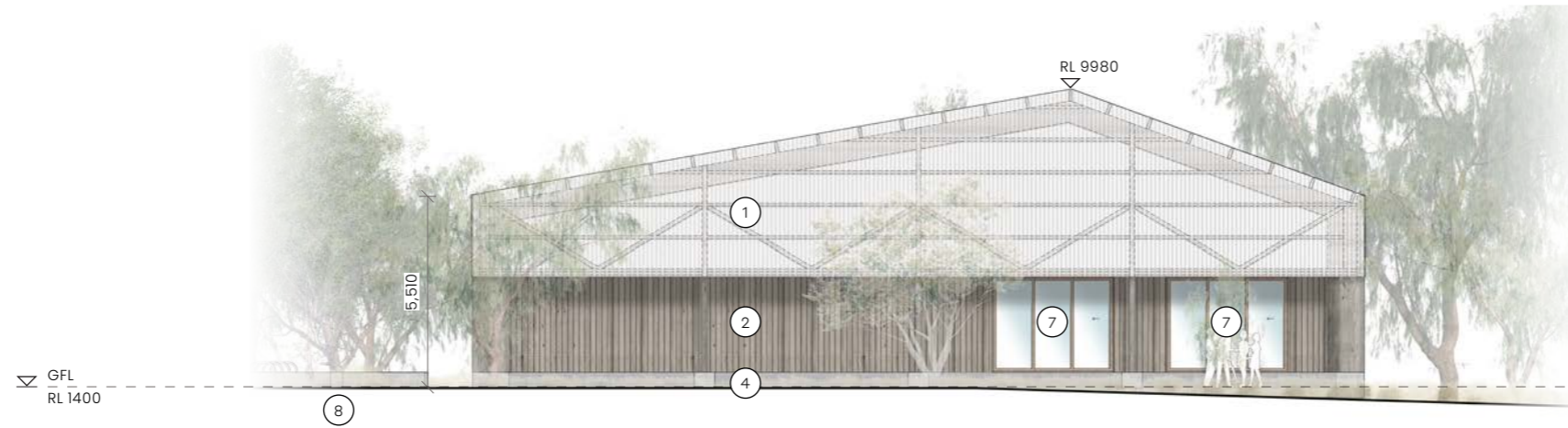


Elevations

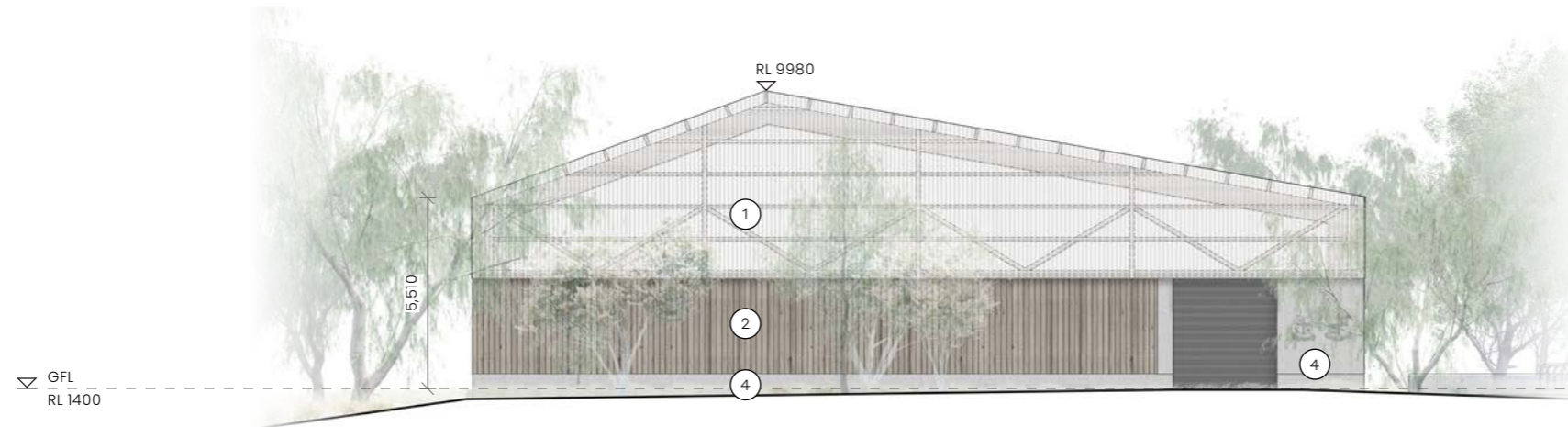
DA 5 Revision A

Coode Street Boathouse Development Application September 2023





East Elevation



West Elevation

- | | |
|--|---|
| 1. CORRUGATED POLYCARBONATE SHEETING | 6. EXISTING CONCRETE BOATRAMP |
| 2. HARDWOOD CLADDING | 7. TIMBER FRAMED GLAZING |
| 3. METAL ROLLER DOORS | 8. LOW HEIGHT SEATING WALL |
| 4. CONCRETE | 9. COLORBOND METAL ROOF SHEETING (SHALE GREY) |
| 5. BESPOKE SLIDING SECURITY SCREEN WITH COLLEGE LOGO'S | 10. PV SOLAR ARRAY |



Scale 1:200 @ A3



Elevations

DA 6 Revision A

Coode Street Boathouse Development Application September 2023





For illustrative purposes only

View from Sir James Mitchell Park

DA 7 Revision A

Coode Street Boathouse Development Application September 2023





For illustrative purposes only

View from Swan River

DA 8 Revision A

Coode Street Boathouse Development Application September 2023





Location A – Existing view from Mill Point Road

DA 9 Revision A

Coode Street Boathouse Development Application September 2023





For illustrative purposes only

Location A – Proposed view from Mill Point Road

DA 10 Revision A

Coode Street Boathouse Development Application September 2023





Location B – Existing view East along the shoreline

DA 11 Revision A

Coode Street Boathouse Development Application September 2023





For illustrative purposes only

Location B – Proposed view East along the shoreline

DA 12 Revision A

Coode Street Boathouse Development Application September 2023





Location C – Existing view from Witcomb Place

DA 13 Revision A

Coode Street Boathouse Development Application September 2023





For illustrative purposes only

Location C – Proposed view from Witcomb Place

DA 14 Revision A

Coode Street Boathouse Development Application September 2023





Location D - Existing view West along the shoreline

DA 15 Revision A

Coode Street Boathouse Development Application September 2023





For illustrative purposes only

Location D – Proposed view West along the shoreline

DA 16 Revision A

Coode Street Boathouse Development Application September 2023



This page has been left blank intentionally



Attachment 3

Landscape Concept





Wesley College and Penrhos College

Coode Street Boathouse

LANDSCAPE CONCEPT PLAN

JULY 2023



LEGEND

- ① EXISTING CAR PARK AND BOAT RAMP
- ② BOAT SHED TRAILER ACCESS
- ③ RE-ALIGNED DUAL USE PATH
- ④ EXISTING BIKE RACK
- ⑤ LOW HEIGHT LANDSCAPE WALLS TO ENTRY
- ⑥ EXISTING BOAT RAMP TO REMAIN AND BE PROTECTED
- ⑦ EXISTING TREES TO BE RETAINED
- ⑧ EXISTING SEA WALL
- ⑨ PROPOSED RIPARIAN ZONE ESTUARINE PLANTING
- ⑩ CONNECTION TO EXISTING PATH
- ⑪ PROPOSED HARDSTAND ADJACENT TO GYM
- ⑫ EXISTING COVERED SEAT TO REMAIN
- EXTENT OF WORK
- PROPOSED TREE PLANTING



PROPOSED RIPARIAN PLANTING



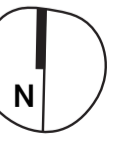
CASUARINA OBESA



MELALEUCA PREISSIANA

PROPOSED TREE SPECIES

COODE STREET BOATHOUSE
 LANDSCAPE CONCEPT PLAN
 SCALE 1:1000 @ A2
 REV E, JULY 2023



This page has been left blank intentionally