



Department of Biodiversity,
Conservation and Attractions



Biodiversity and
Conservation Science

*We're working for
Western Australia.*

Swan Canning Estuary Water Quality Monitoring Project

Weekly Water Quality Report

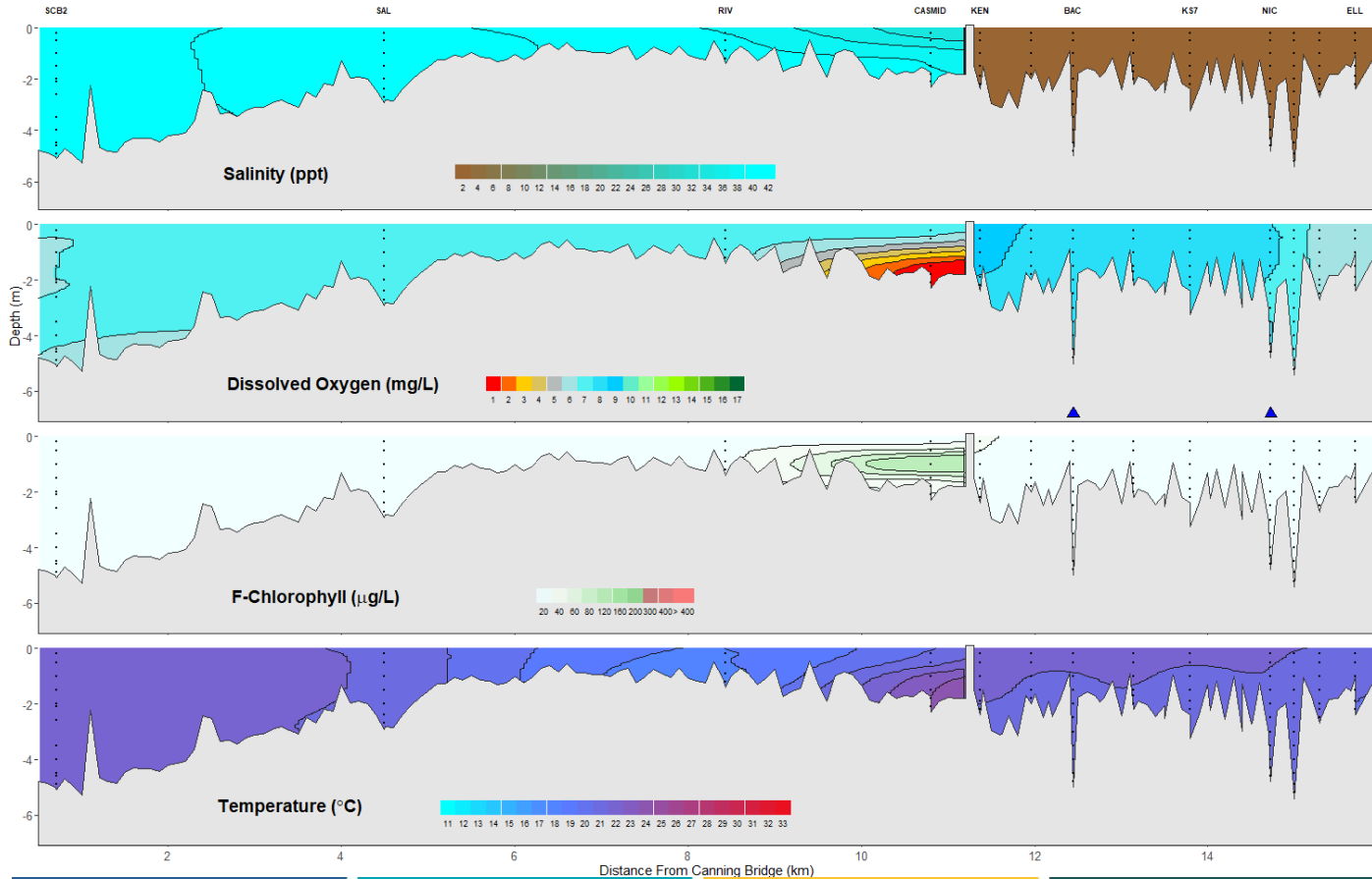
Canning Estuary and Lower Canning River

9th April 2024

Prepared by

Rivers and Estuaries Science
Biodiversity and Conservation Science
Department of Biodiversity, Conservation and Attractions

Canning Estuary and Lower Canning River - Water Quality Profiles – 9th April 2024



Date: 9th April 2024

Weather & tide conditions: Conditions were mainly clear with an easterly breeze of up to 16.7 knots. The predicted tides at Barrack St were 0.95 m at 12:09 am (high tide), 0.83 m at 4:56 am (low tide), 1.11 m at 12:05 pm (2nd high tide), and 0.76 m at 8:12 pm (2nd low tide). Perth recorded no rainfall in the week prior to sampling (Bureau of Meteorology).

Oxygenation: The Bacon St and Nicholson Rd oxygenation plants were not triggered to provide oxygen in the 24 hours prior to sampling.

Canning Estuary (SCB2 to CASMID): The Canning Estuary was hypersaline from SCB2 to RIV and saline over hypersaline at CASMID. Waters were oxygenated or well oxygenated except subsurface waters at CASMID which were low in oxygen or hypoxic and bottom waters which were anoxic. Chlorophyll fluorescence was low except for subsurface waters at CASMID which were moderate. Water temperatures ranged from 17.7 to 23.1 °C at the time of sampling.

Lower Canning River (KEN to ELL): The Lower Canning River was fresh, waters were oxygenated or well oxygenated and chlorophyll fluorescence was low. Water temperatures ranged from 19.9 to 21.6 °C at the time of sampling.

NB: Profile plots are visual interpolations of measured parameters only. Detailed data are available at wir.water.wa.gov.au.

Oxygenation Plant Operational Status:

- ▲ Operating for part or all of the 24 hours prior to sampling
- ▲ Operable but not triggered to operate in the 24 hours prior to sampling
- ▲ Inoperable for part or all of the 24 hours prior to sampling

Definitions:

Salinity – fresh <5, brackish 5-25, saline 25-35, hypersaline >35
Dissolved oxygen – well oxygenated >6 mg L⁻¹, oxygenated >4-6 mg L⁻¹, low oxygen >2-4 mg L⁻¹, hypoxic 0.5-2 mg L⁻¹, anoxic <0.5 mg L⁻¹
Chlorophyll fluorescence (mod/high flow): low < 50 µg L⁻¹, moderate 50-150 µg L⁻¹, high 150-400 µg L⁻¹, extreme > 400 µg L⁻¹