



Department of Biodiversity,  
Conservation and Attractions



Biodiversity and  
Conservation Science

*We're working for  
Western Australia.*

# Swan Canning Estuary Water Quality Monitoring Project

## Weekly Water Quality Report

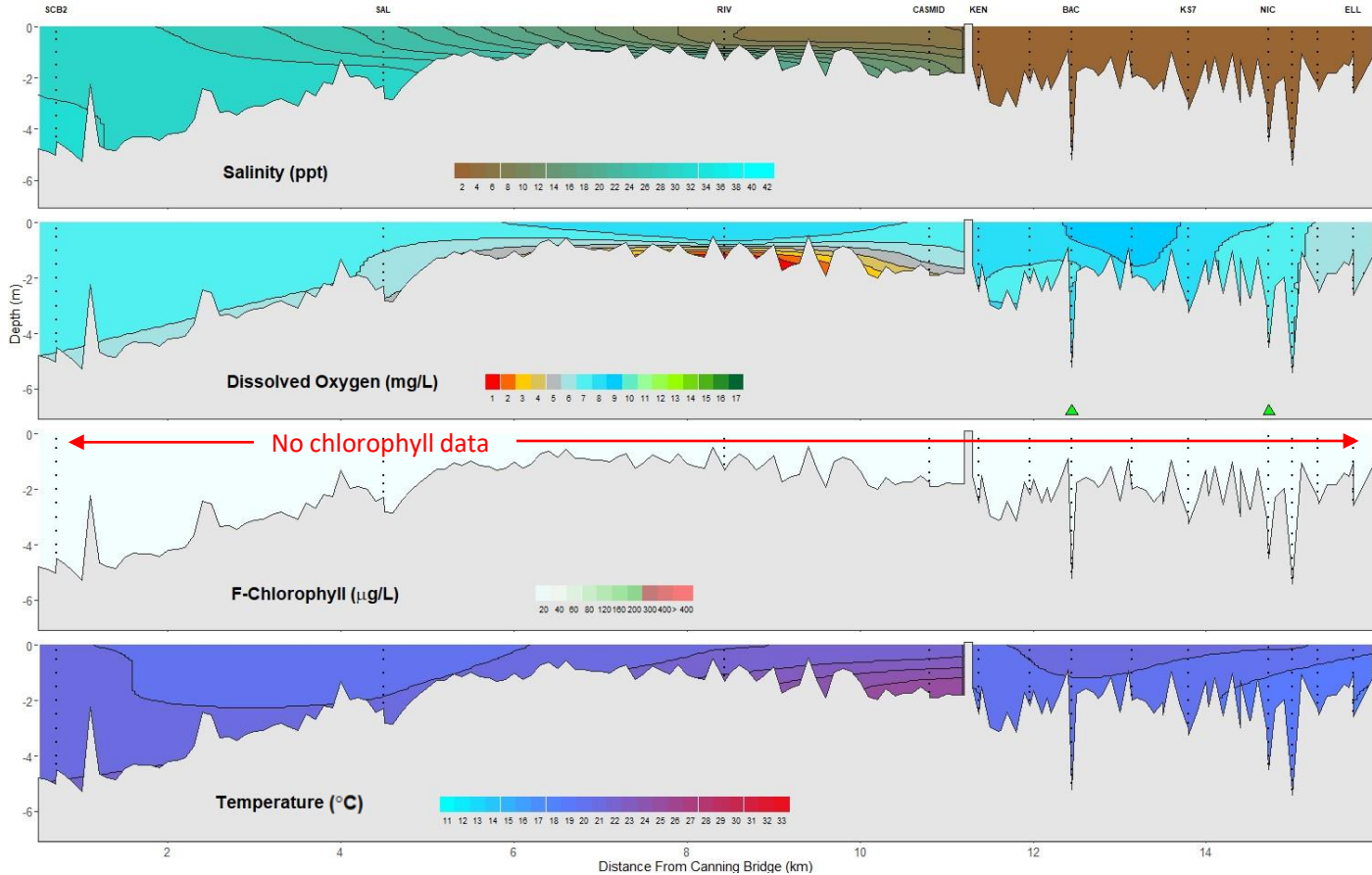
### Canning Estuary and Lower Canning River

31<sup>st</sup> October 2023

Prepared by

Rivers and Estuaries Science  
Biodiversity and Conservation Science  
Department of Biodiversity, Conservation and Attractions

## Canning Estuary and Lower Canning River - Water Quality Profiles – 31<sup>st</sup> October 2023



Date: 31<sup>st</sup> October 2023

Weather & tide conditions: Conditions were mostly clear with scattered clouds and a variable easterly breeze of up to 7.1 knots. The predicted tides at Barrack St were 0.53 m at 10:31 am (low tide) and 1.11 m at 11:59 pm (high tide). Perth recorded no rainfall in the week prior to sampling (Bureau of Meteorology).

Oxygenation: The Bacon St and Nicholson Rd oxygenation plants were triggered to provide oxygen in the 24 hours prior to sampling.

Canning Estuary (SCB2 to CASMID): The Canning Estuary was saline at SCB2, brackish over saline at SAL, brackish at RIV and fresh over brackish at CASMID. Waters were oxygenated or well oxygenated, except for bottom waters at RIV which were hypoxic. Water temperatures ranged from 19.5 °C to 24.6 °C at the time of sampling.

Lower Canning River (KEN to ELL): The Lower Canning River was fresh, waters were oxygenated or well oxygenated and water temperatures ranged from 18.0 °C to 20.7 °C at the time of sampling.

NB: Fluorescence data not available due to sensor issue.

NB: Profile plots are visual interpolations of measured parameters only. Detailed data are available at [wir.water.wa.gov.au](http://wir.water.wa.gov.au).

**Oxygenation Plant Operational Status:**

- ▲ Operating for part or all of the 24 hours prior to sampling
- ▲ Operable but not triggered to operate in the 24 hours prior to sampling
- ▲ Inoperable for part or all of the 24 hours prior to sampling

**Definitions:**

Salinity – fresh <5, brackish 5-25, saline 25-35, hypersaline >35  
Dissolved oxygen – well oxygenated >6 mg L<sup>-1</sup>, oxygenated >4-6 mg L<sup>-1</sup>, low oxygen >2-4 mg L<sup>-1</sup>, hypoxic 0.5-2 mg L<sup>-1</sup>, anoxic <0.5 mg L<sup>-1</sup>  
Chlorophyll fluorescence (mod/high flow): low < 50 µg L<sup>-1</sup>, moderate 50-150 µg L<sup>-1</sup>, high 150-400 µg L<sup>-1</sup>, extreme > 400 µg L<sup>-1</sup>