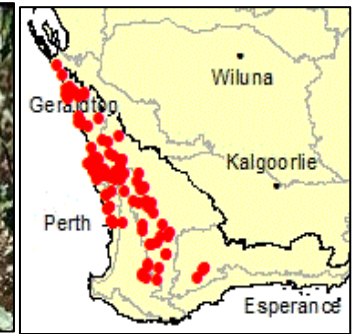
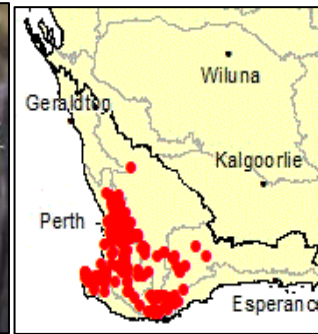
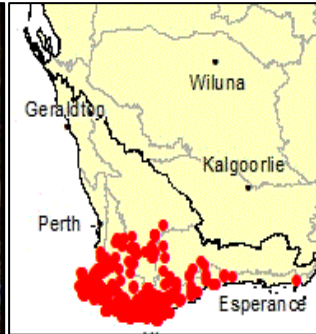


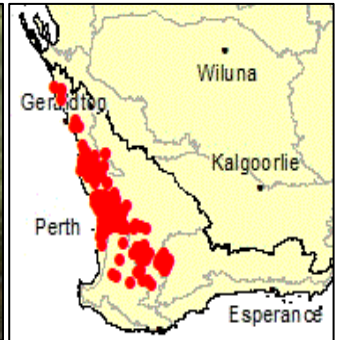
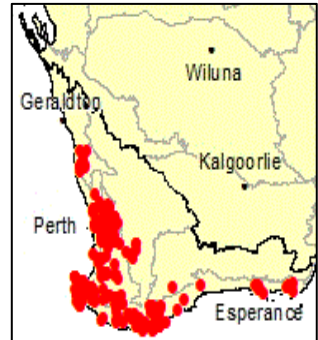
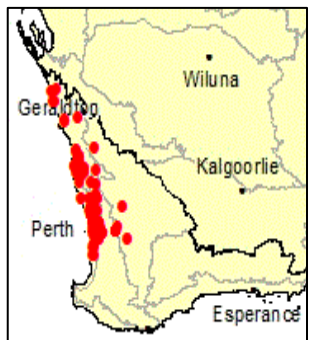
## Some common *Phytophthora* Dieback indicator plants found in the Wheatbelt



*ANDERSONIA CAERULEA* – COMMON – **BLUE FOXTAILS**

*STYPHELIA TENUIFLORA* – COMMON – **COMMON PINHEATH**

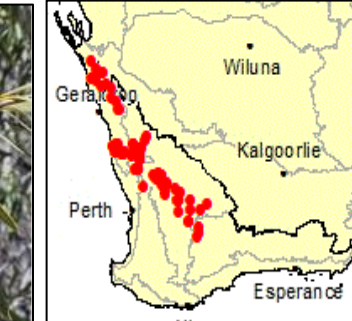
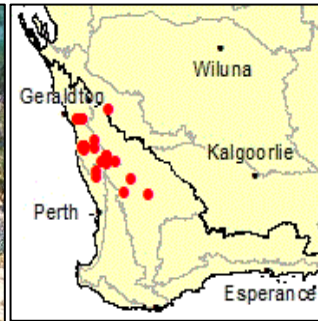
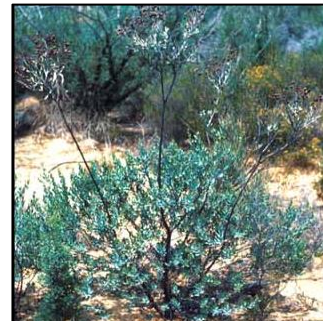
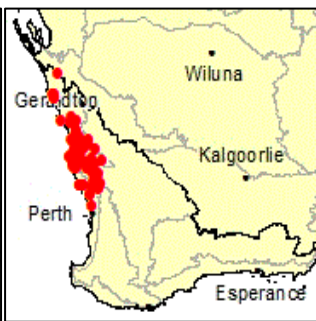
*BANKSIA PRIONOTES* – COMMON – **ACORN BANKSIA**



*BANKSIA MENZIESII* – COMMON – **FIREWOOD BANKSIA**

*HAKEA RUSCIFOLIA* – COMMON – **CANDLE HAKEA**

*ADENANTHOS CYGNORUM* – COMMON – **COMMON WOOLLYBUSH**



*BANKSIA LEPTOPHYLLA* – COMMON – **SLENDER-LEAVED BANKSIA**

*GREVILLEA POLYBOTRYA* – COMMON – **HONEYPOT GREVILLEA**

*XYLOMELUM ANGUSTIFOLIUM* – COMMON – **SAND-PLAIN WOODY PEAR**

**NOTE:** This is not a complete list of *phytophthora* indicator species for the area. It is provided as a guide only. A registered disease interpreter must be consulted for a proper diagnosis for disease presence. Map source: [florabase.dpaw.wa.gov.au](http://florabase.dpaw.wa.gov.au) accessed January 2020. Images: various sources.