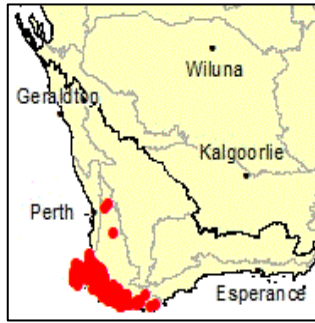
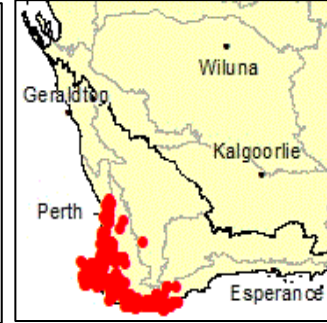


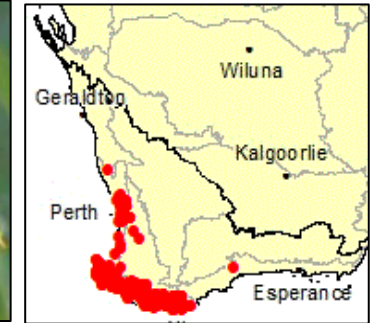
## Some *Phytophthora* Dieback indicator plants that may persist in the Karri type vegetation



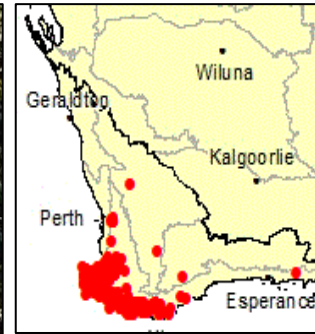
*PODOCARPUS DROUYNIANUS* – COMMON – EMU PLUM/EMU BUSH



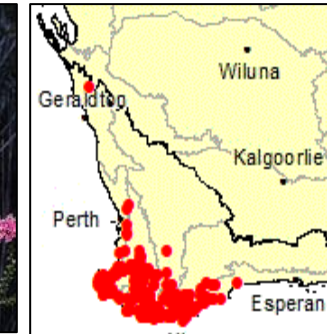
*ADENANTHOS OBOVATUS* – COMMON – BASKET FLOWER



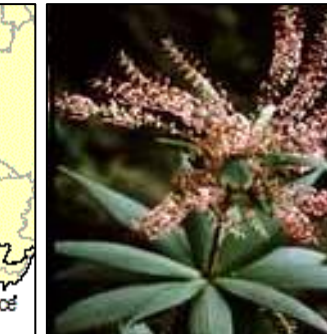
*PULTENAEA RETICULATA* – COMMON – NO COMMON NAME



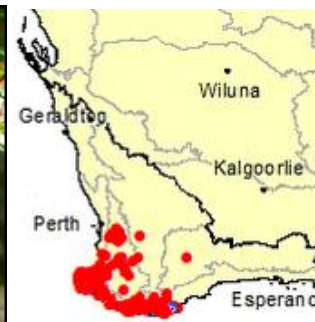
*PATERSONIA UMBROSA* – COMMON – YELLOW FLAGS



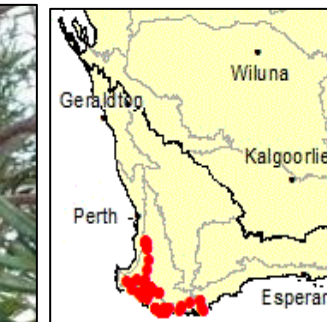
*KUNZEA RECURVA* – COMMON – MOUNTAIN KUNZEA



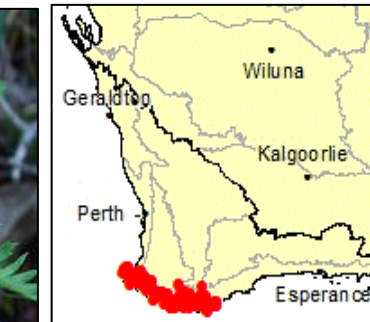
*LEUCOPOGON VERTICILLATUS* – COMMON – TASSEL FLOWER



*LEUCOPOGON GLABELLUS* – NO COMMON NAME



*BANKSIA SEMINUDA* – COMMON – RIVER BANKSIA



*PETROPHILE DIVERSIFOLIA* – NO COMMON NAME

**NOTE:** This is not a complete list of *phytophthora* indicator species for the area. It is provided as a guide only. A registered disease interpreter must be consulted for a proper diagnosis for disease presence. Map source: [florabase.dpaw.wa.gov.au](http://florabase.dpaw.wa.gov.au) accessed January 2020. Images: various sources.