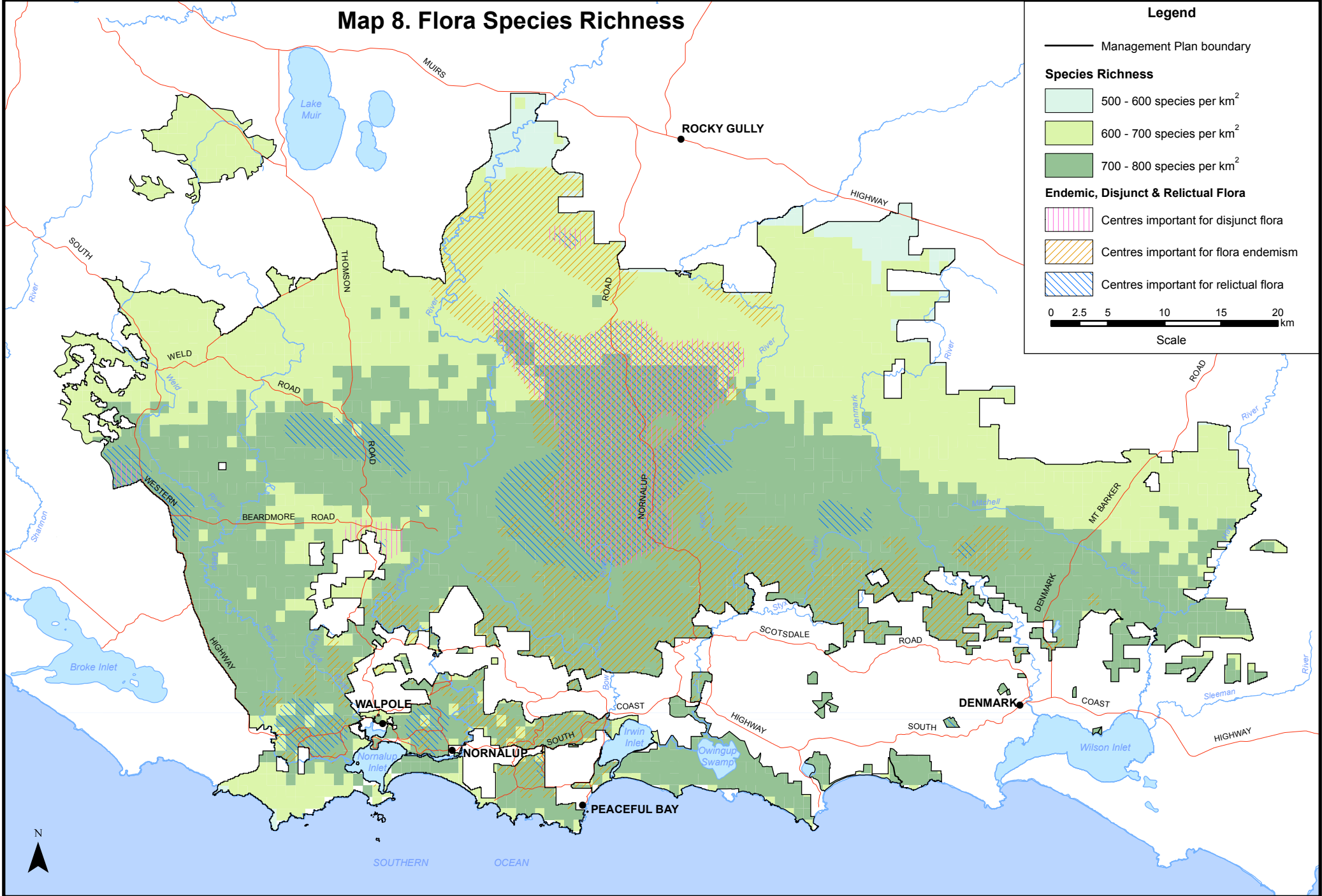


Map 8. Flora Species Richness



Legend

- Management Plan boundary
 - Species Richness**
 - 500 - 600 species per km²
 - 600 - 700 species per km²
 - 700 - 800 species per km²
 - Endemic, Disjunct & Relictual Flora**
 - Centres important for disjunct flora
 - Centres important for flora endemism
 - Centres important for relictual flora
- 0 2.5 5 10 15 20 km
Scale