

Flowering over the seasons at Brixton Street Wetlands

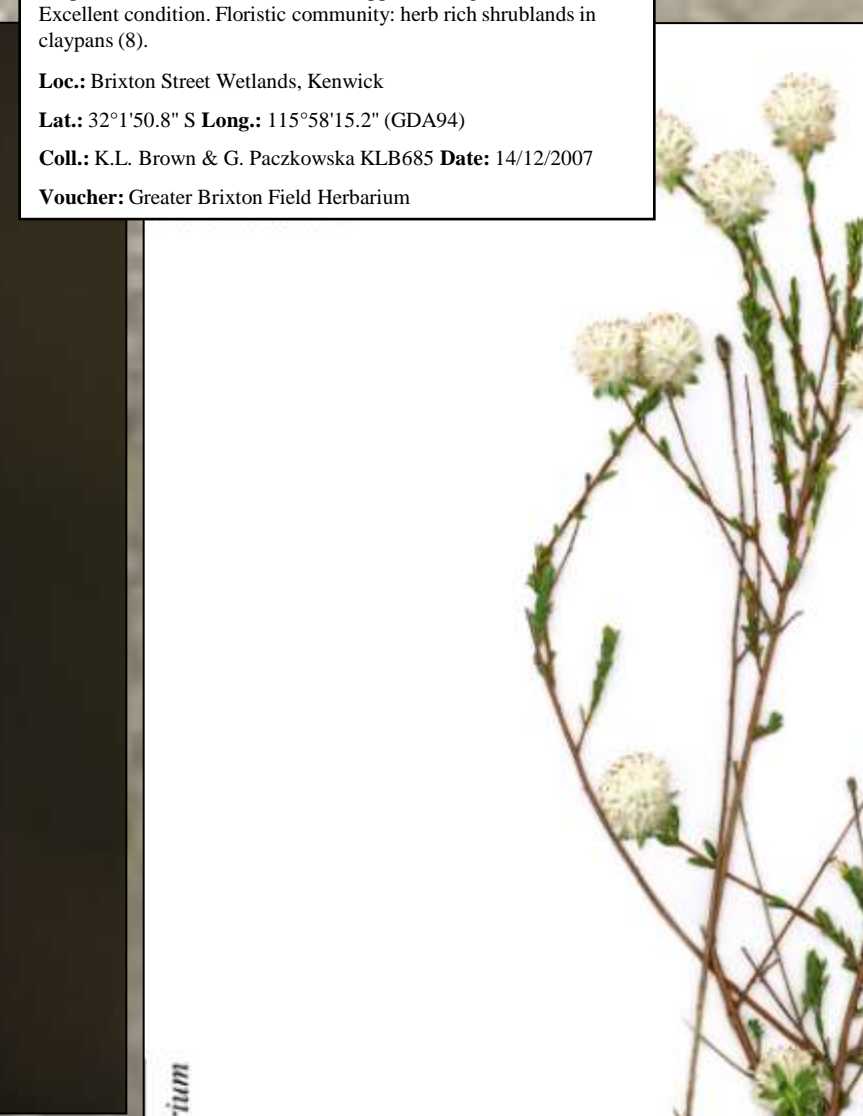
Summer



Isotoma pusilla Benth.
Campanulaceae
Erect stem to 5 cm high and 2 cm wide. Flowers white-purple. Abundant. Water inundated claypan. Brown clay. Melaleuca lateritia shrubland Amphibromus grassland. Associated species: Melaleuca lateritia, Amphibromus nervosus, Acaia affinis, Melibolus sp., Eucalyptus condition. Floristic community: both rich shrublands in claypan (S).
Loc: Brixton Street Wetlands, Kennick
Coll: K.L. Brown & G. Paczkowska KL8684 Date: 27/11/2007
Voucher: Greater Brixton Field Herbarium



Calytrix aurea Lodd.
Myrtaceae
Perennial erect compact shrub to 0.7 m high. Flowers yellow. Locally common. Wet flats. Yellow-grey sandy loam. Viminaria juncea tall shrubland. Associated species: Viminaria juncea, Verticordia spp., Keraia micrantha, Hibiscus grandiflorus, H. triflorus, Acaia leucocarpa var. leucocarpa, Hypobryonia angustifolium. Excellent condition. Floristic community: both rich shrublands in claypan (S).
Loc: Brixton Street Wetlands, Kennick
Coll: K.L. Brown & G. Paczkowska KL8688 Date: 14/12/2007
Voucher: Greater Brixton Field Herbarium



Pimelea imbricata var. *major* (Molina) Rye
Thymelaeaceae
Perennial grassy shrub to 1.5 m high. Flowers white. Common. Water inundated claypan. Brown clay. Melaleuca lateritia shrubland Amphibromus grassland. Associated species: Amphibromus nervosus, Melibolus spp., Lathyrus gracilis, Eucalyptus condition. Floristic community: both rich shrublands in claypan (S).
Loc: Brixton Street Wetlands, Kennick
Coll: K.L. Brown & G. Paczkowska KL8685 Date: 14/12/2007
Voucher: Greater Brixton Field Herbarium



Nuytsia floribunda (Labié) G.Don
Loranthaceae
Tree to 4-5 m. Orange-yellow flowers. Locally common. Low sandy soil. White yellow sand. Mann woodlands. Associated species: Corymbia calophylla, Viminaria juncea, Hibiscus bopodensis, Hibiscus dilatatus, Gammahortia capillaris, Elaeocharis cylindrica. Very good condition. Floristic community: Corymbia calophylla-Kinga mallee woodlands in heavy soils (S). Edge of track.
Loc: Brixton Street Wetlands, Kennick
Coll: G. Paczkowska & H.K.J. Hayes GP50 Date: 30/12/2008
Voucher: Greater Brixton Field Herbarium



Melaleuca lateritia A. Detr.
Myrtaceae
Perennial erect shrub to 2 m high and 2 m wide. Flowers red. Common. Water inundated claypan. Brown clay. Melaleuca lateritia shrubland Amphibromus grassland. Associated species: Amphibromus nervosus, Pimelea imbricata var. major, Melibolus spp., Lathyrus gracilis. Excellent condition. Floristic community: both rich shrublands in claypan (S).
Loc: Brixton Street Wetlands, Kennick
Coll: K.L. Brown & G. Paczkowska KL8684 Date: 14/12/2007
Voucher: Greater Brixton Field Herbarium



Trichocline sp. Tretton (B.J. Knight & N. Gibson 564)
Asteraceae
Perennial herb to 25 cm high. Flowers white with yellow cone. Narrow mallee. Occasional. Wet flats. Usually wet. Grey-yellow sand. Viminaria juncea tall shrubland. Associated species: Viminaria juncea, Cyathochaeta arvensis, Ptilimnium nutans, Hakea inflexa, Chromolaena odorata, Nardoo alpestris. Excellent condition. Floristic community: both rich shrublands in claypan (S). Burnt March 2009.
Loc: Brixton Street Wetlands, Kennick
Coll: K.L. Brown & G. Paczkowska KL8687 Date: 25/11/2009
Voucher: Greater Brixton Field Herbarium

Schoenolaena juncea Bunge
Apiaceae
Perennial erect herb to 70 cm high. Flowers white. Uncommon. Water inundated claypan. Brown yellow clay. Melaleuca lateritia shrubland Amphibromus grassland. Associated species: Amphibromus nervosus, Pimelea imbricata var. major, Melibolus spp., Acaia affinis. Excellent condition. Floristic community: both rich shrublands in claypan (S). Some conch present.
Loc: Brixton Street Wetlands, Kennick
Coll: K.L. Brown & G. Paczkowska KL8683 Date: 14/12/2007
Voucher: Greater Brixton Field Herbarium

Schoenolaena juncea
Family: Apiaceae

