

Flowering over the seasons at Brixton Street Wetlands

Spring



Anigozanthos manglietii D. Don, subsp. *manglietii*
 Haemodoraceae
 Perennial herb to 1 m. Flowers green and red. Locally common. Low sandy soil. Grey sandy clay. Moist woodlands. Associated species: *Corymbia calophylla*, *Trinolia octandra*, *Burchardia congesta*, *Muehlenbergia tenax*, *Guarea robusta*, *Acacia baileyana* var. *baileyana*, *Hibbertia hypericoides*, *Briza sp.*
 Excellent condition. Floristic community: *Corymbia calophylla*-*Ringsia australis* woodlands on heavy soils (S1).
 Loc: Brixton Street Wetlands, Kenwick
 Lat: 32°15'31" S Long: 115°58'14" E (GDA94)
 Coll: K.L. Brown & G. Paczkowska KL874 Date: 24/09/2008
 Voucher: Greater Brixton Field Herbarium



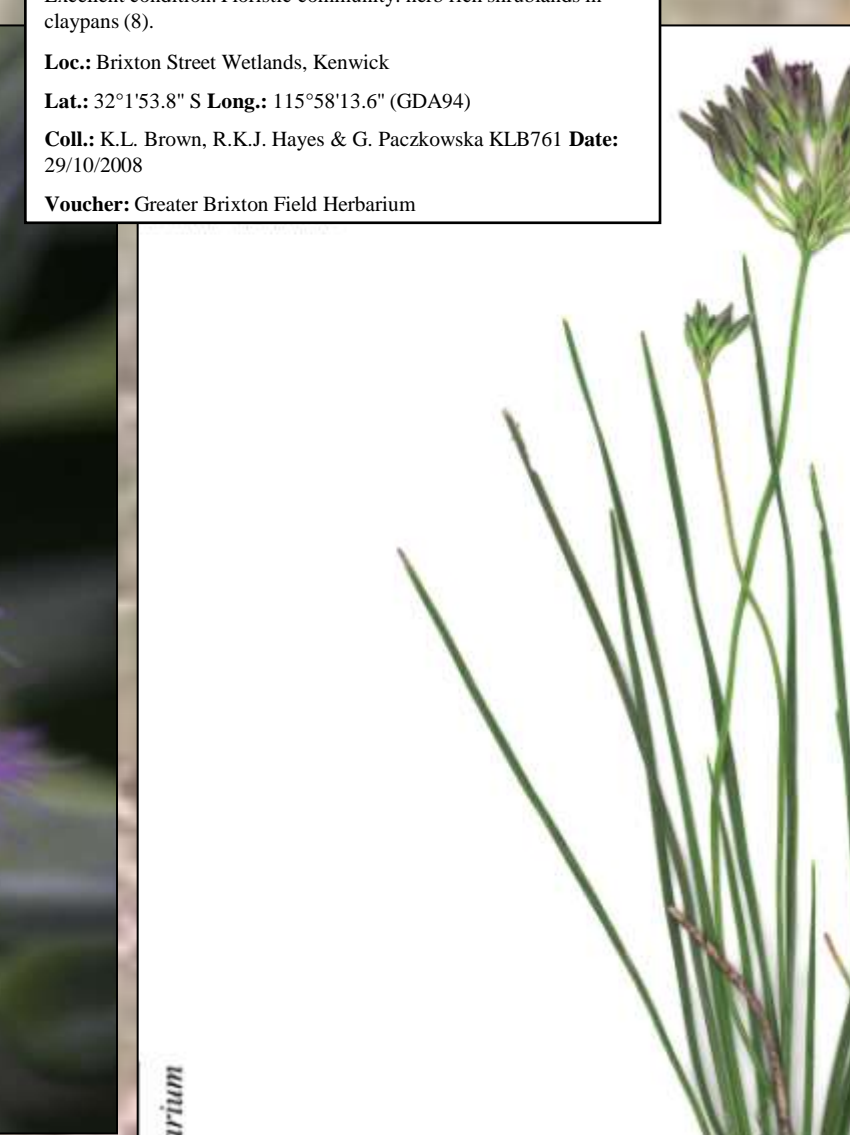
Thysanotus triandrus (Labié.) R.Br.
 Asparagaceae
 Perennial herb to 30 cm. Flowers purple. Occasional. Winter wet soil. Dry sandy clay. Moist woodlands. Associated species: *Hibbertia hypericoides*, *Cassidix capillaris*, *Muehlenbergia tenax*, *Burchardia congesta*.
 Excellent condition. Floristic community: herb rich shrublands in dappled (S).
 Loc: Brixton Street Wetlands, Kenwick
 Lat: 32°13'38" S Long: 115°58'18" E (GDA94)
 Coll: K.L. Brown, R.K.J. Hayes & G. Paczkowska KL874 Date: 29/10/2009
 Voucher: Greater Brixton Field Herbarium



Eriochorda multifida (Labié.) R.Br.
 Lentibulariaceae
 Annual herb to 20 cm high. Flowers pink. Common. Wet flats. Wet brown clay. *Viminaria juncus* tall shrubland. Associated species: *Viminaria juncus*, *Muehlenbergia tenax*, *Briza sphaerocarpa*, *Neorhoe abjectoides*, *Kanua micrantha*, *Hypochaeris corolla*.
 Excellent condition. Floristic community: herb rich shrublands in dappled (S).
 Loc: Brixton Street Wetlands, Kenwick
 Lat: 32°12'32" S Long: 115°58'14" E (GDA94)
 Coll: K.L. Brown & G. Paczkowska KL874 Date: 10/10/2007
 Voucher: Greater Brixton Field Herbarium



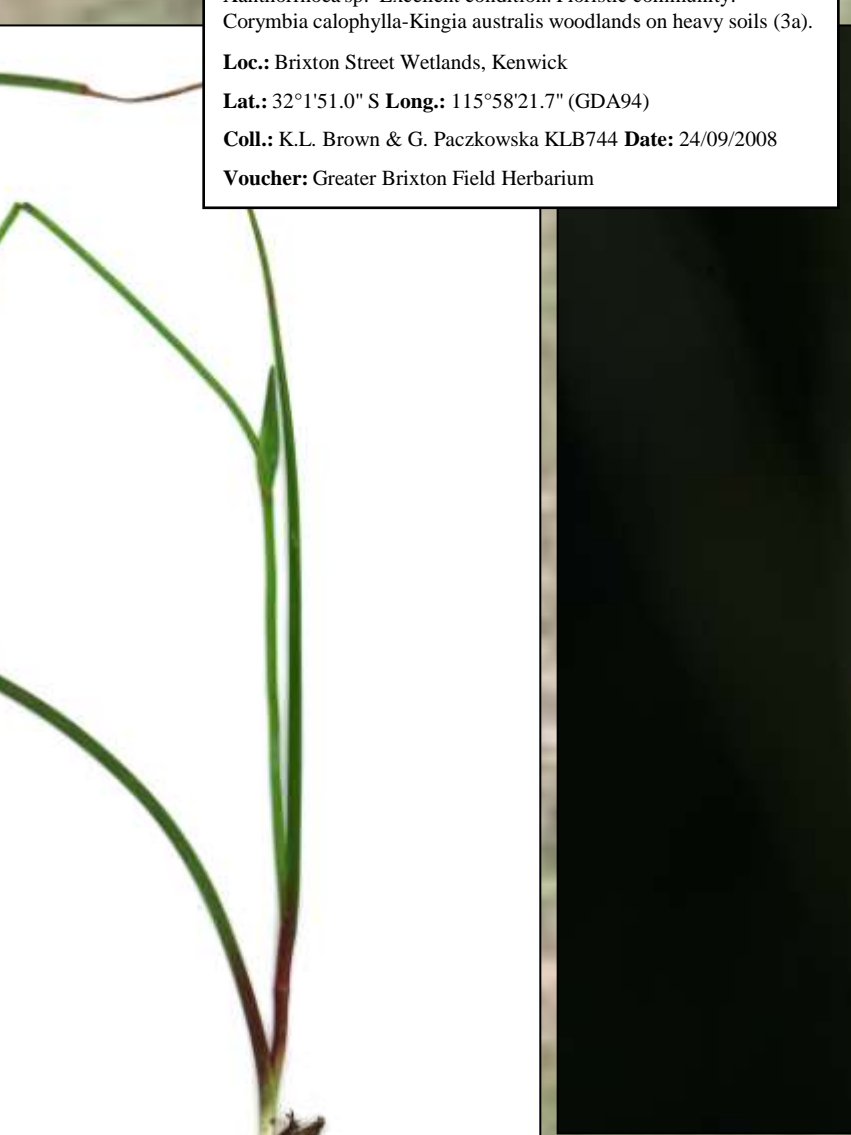
Utricularia multifida
 Family: Lentibulariaceae



Thysanotus triandrus
 Family: Asparagaceae



Burchardia congesta
 Family: Colchicaceae



Verticordia lindleyi subsp. *lindleyi*
 Family: Myrtaceae



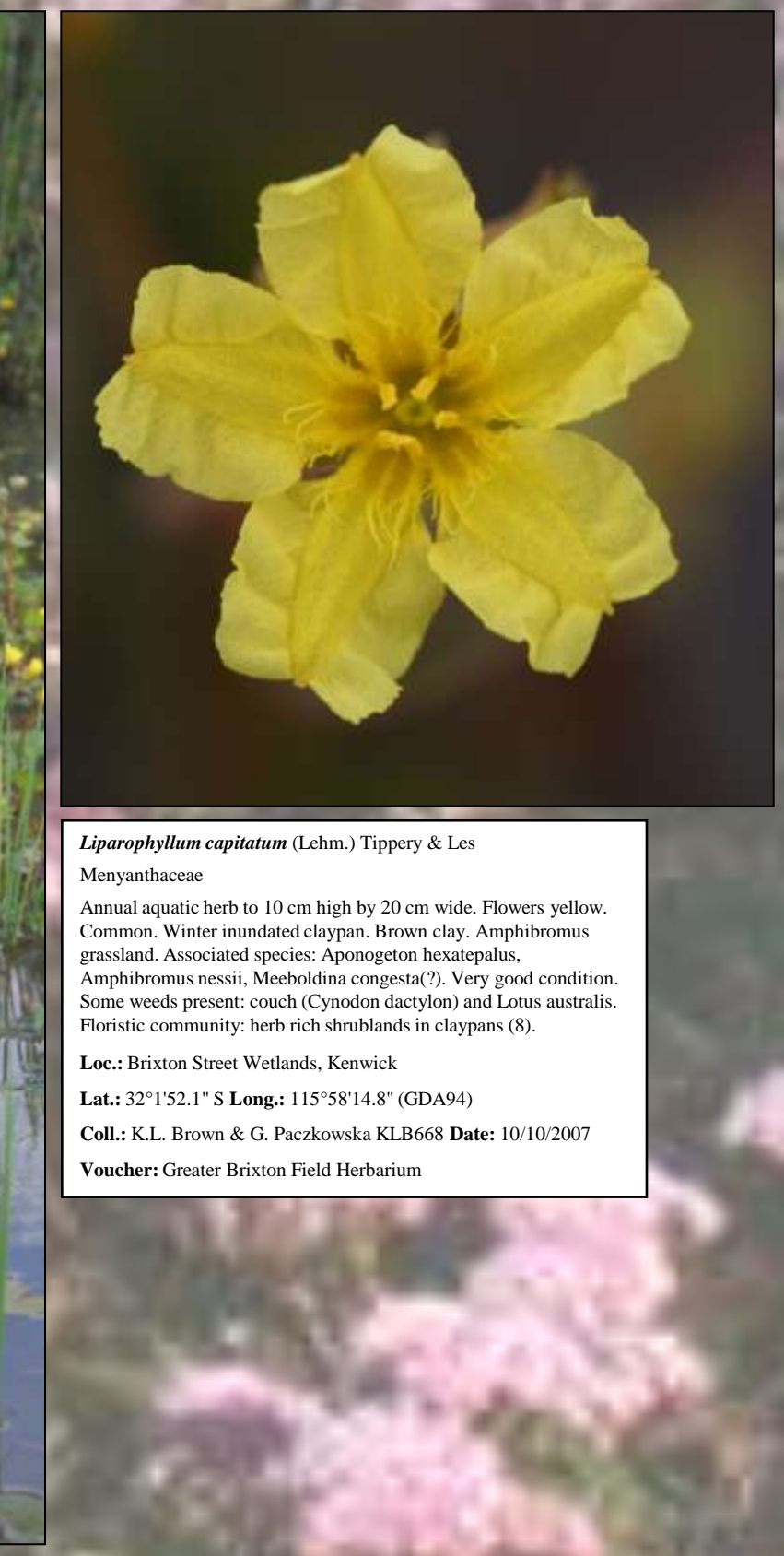
Verticordia densiflora var. *densiflora*
 Family: Myrtaceae



Verticordia densiflora var. *densiflora*
 Family: Myrtaceae



Calothamnus hirsutus
 Family: Myrtaceae



Liparophyllum capitatum
 Family: Menyanthaceae

