



Department of Biodiversity,
Conservation and Attractions



Biodiversity and
Conservation Science

*We're working for
Western Australia.*

Swan Canning Estuary Water Quality Monitoring Project

Weekly Water Quality Report

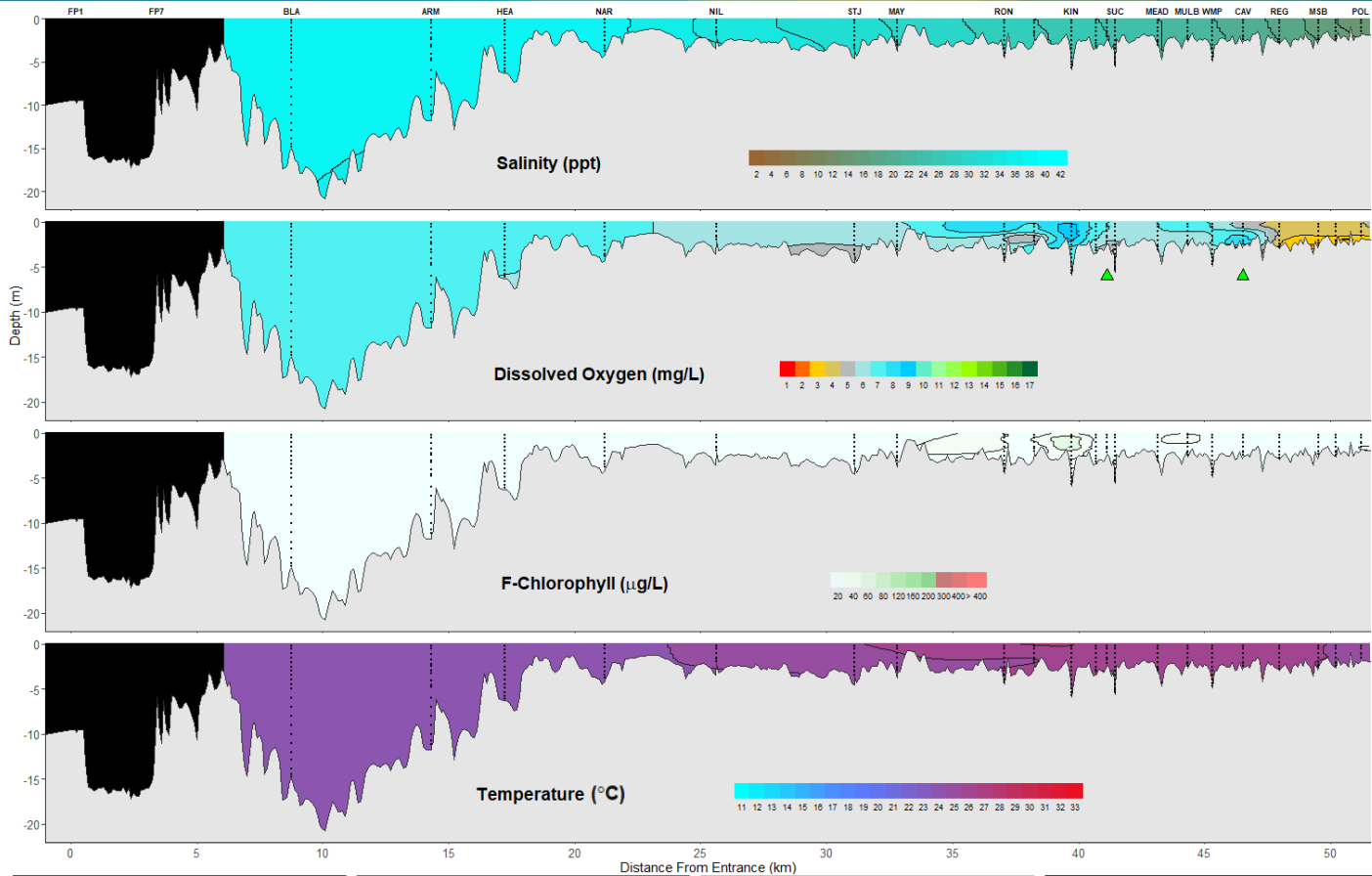
Lower Swan Canning Estuary to Upper Swan Estuary

7th March 2023

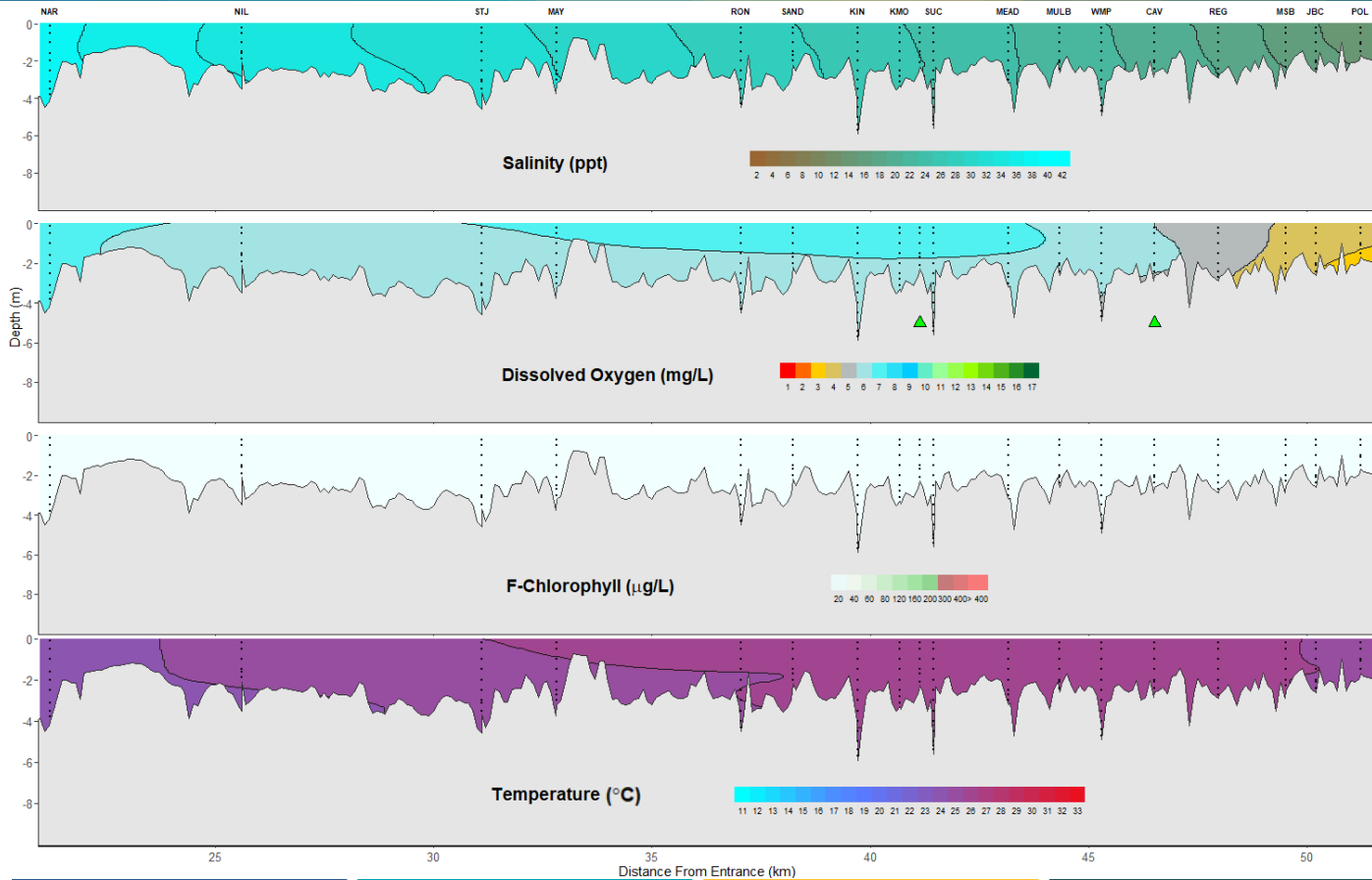
Prepared by

Rivers and Estuaries Science
Biodiversity and Conservation Science
Department of Biodiversity, Conservation and Attractions

Swan Canning Estuary - Water Quality Profiles - 7th March 2023



Middle and Upper Swan Estuary - Water Quality Profiles - 7th March 2023



Date: 7th March 2023

Weather & tide conditions: Conditions were sunny with a predominantly easterly breeze of up to 11 knots. The predicted tides at Barrack St were 0.66 m at 7:30 am (low tide) and 0.84 m at 13:35 pm (high tide). Perth recorded 1.2 mm of rainfall in the week prior to sampling (Bureau of Meteorology).

Oxygenation: The Guildford and Caversham oxygenation plants were both operable and providing oxygen in the 24 hours prior to sampling.

Lower Swan Canning Estuary (FPI to NAR): The Lower Swan Canning Estuary was hypersaline (36 ppt) and waters were oxygenated to well oxygenated. Chlorophyll fluorescence was low throughout and water temperatures ranged from 23.2 °C to 23.7 °C at the time of sampling.

Middle Swan Estuary (NIL to RON): The Middle Swan Estuary was saline and waters were oxygenated or well oxygenated throughout. Chlorophyll fluorescence was low throughout and water temperatures ranged from 24.2 to 26.0 °C at the time of sampling.

Upper Swan Estuary (SAND to POL): The Upper Swan Estuary was saline between SAND and KIN, and brackish from KMO to POL. Between SAND and CAV, waters were oxygenated or well oxygenated throughout, and from REG to POL, waters were low in oxygen. Chlorophyll fluorescence was low throughout, except for moderate levels in the mid to surface waters of KIN. Water temperatures ranged from 24.6 °C to 26.1 °C at the time of sampling.

NB: Profile plots are visual interpolations of measured parameters only. Detailed data are available at wir.water.wa.gov.au.

Oxygenation Plant Operational Status:

- ▲ Operating for part or all of the 24 hours prior to sampling
- ▲ Operable but not triggered to operate in the 24 hours prior to sampling
- ▲ Inoperable for part or all of the 24 hours prior to sampling

Definitions:

Salinity – fresh <5, brackish 5-25, saline 25-35, hypersaline >35
Dissolved oxygen – well oxygenated >6 mg L⁻¹, oxygenated >4-6 mg L⁻¹, low oxygen >2-4 mg L⁻¹, hypoxic 0.5-2 mg L⁻¹, anoxic <0.5 mg L⁻¹
Chlorophyll fluorescence (low flow): low < 50 µg L⁻¹, moderate 50-150 µg L⁻¹, high 150-400 µg L⁻¹, extreme > 400 µg L⁻¹